



Panasonic
Professional Lighting



Panasonic LED
PRICE LIST 2018

CONTENT

COMMERCIAL LIGHTING _____ 03

RETAIL & HOSPITALITY LIGHTING _____ 10

INDUSTRIAL LIGHTING _____ 14

OUTDOOR LIGHTING _____ 22

COMMERCIAL LIGHTING

COMMERCIAL LIGHTING

Base light

Deep type recess mounting LED luminaire equipped with CRCA powder coating housing, anti-glare diffuser with separate energy efficient electronic driver with IP20.



Base Light

Wattage	CCT	Product Code	Cut Out Dimension (mm)	Product Dimension (mm)					MRP (₹)
				L/Dia	X	W/Dia	X	H	
20W	4000K	PBLM05204	575 x 575	595	X	595	X	70	3750
20W	6500K	PBLM05207	575 x 575	595	X	595	X	70	3750
25W	4000K	PBLM11254	575 x 575	595	X	595	X	70	3715
25W	6500K	PBLM11257	575 x 575	595	X	595	X	70	3715
25W	3000K	PBLM05253	575 x 575	595	X	595	X	75	2900
25W	4000K	PBLM05254	575 x 575	595	X	595	X	75	2900
25W	6500K	PBLM05257	575 x 575	595	X	595	X	75	2900
30W	3000K	PBLM05303	575 x 575	595	X	595	X	75	3020
30W	4000K	PBLM05304	575 x 575	595	X	595	X	75	3020
30W	6500K	PBLM05307	575 x 575	595	X	595	X	75	3020
36W	3000K	PBLM01363	575 x 575	595	X	595	X	75	3540
36W	4000K	PBLM01364	575 x 575	595	X	595	X	75	3540
36W	6500K	PBLM01367	575 x 575	595	X	595	X	75	3540

Ultra slim edge lit type recess mounting LED luminaire with extruded aluminium housing, anti-glare diffuser and separate energy efficient electronic driver with IP20.



Ultra Slim Base Light

Wattage	CCT	Product Code	Cut Out Dimension (mm)	Product Dimension (mm)					MRP (₹)
				L/Dia	X	W/Dia	X	H	
36W	4000K	PBLM09364	595 x 595	600	x	600	x	10	4050
36W	6500K	PBLM09367	595 x 595	600	x	600	x	10	4050
36W	4000K	PBLM10364	595 x 595	600	x	600	x	10	4250
36W	6500K	PBLM10367	595 x 595	600	x	600	x	10	4250

Note : PBLM10XXX with POP clip option

COMMERCIAL LIGHTING

Base light

Ultra slim edge lit type recess mounting LED luminaire with extruded aluminium housing, anti-glare diffuser and separate energy efficient electronic driver with IP20.



Ultra Slim Base Light

Wattage	CCT	Product Code	Cut Out Dimension (mm)	Product Dimension (mm)					MRP (₹)
				L/Dia	X	W/Dia	X	H	
40W	3000K	PBLM04403	275 x 1175	295	X	1195	X	9.6	5575
40W	4000K	PBLM04404	275 x 1175	295	X	1195	X	9.6	5575
40W	6500K	PBLM04407	275 x 1175	295	X	1195	X	9.6	5575

Techzone

Recess mounting Techzone introduce a uniquely clean, simple lighting system offering continuous lighting solution for Armstrong Techzone system



Techzone

Wattage	CCT	Product Code	Cut Out Dimension (mm)	Product Dimension (mm)					MRP (₹)
				L/Dia	X	W/Dia	X	H	
25	4000K	PTZM02254	1180 x 135	1190	X	145	X	100	5500
25	6500K	PTZM02257	1180 x 135	1190	X	145	X	100	5500

COMMERCIAL LIGHTING

Linear Fixture

Aesthetically designed LED linear fixture suitable for suspended down type with housing made of high quality extruded aluminium alloy including die-cast aluminium end cap. These series are also available with seamless continuous lighting system ensuring no visible dark spot or light leakages with IP20.



Suspended Linear Down Type

Wattage	CCT	Product Code	Cut Out Dimension (mm)	Product Dimension (mm)					MRP (₹)
				L/Dia	X	W/Dia	X	H	
15W	3000K	PLHM01153	-	600	X	54	X	88	4000
15W	4000K	PLHM01154	-	600	X	54	X	88	4000
15W	6000K	PLHM01157	-	600	X	54	X	88	4000
25W	3000K	PLHM01253	-	1200	X	54	X	88	5775
25W	4000K	PLHM01254	-	1200	X	54	X	88	5775
25W	6000K	PLHM01256	-	1200	X	54	X	88	5775
18W	3000K	PLHM01183	-	600	X	54	X	88	4500
18W	4000K	PLHM01184	-	600	X	54	X	88	4500
18W	6000K	PLHM01186	-	600	X	54	X	88	4500
35W	3000K	PLHM01353	-	1200	X	54	X	88	6125
35W	4000K	PLHM01354	-	1200	X	54	X	88	6125
35W	6000K	PLHM01356	-	1200	X	54	X	88	6125
50W	3000K	PLHM01503	-	2390	X	54	X	88	9000
50W	4000K	PLHM01504	-	2390	X	54	X	88	9000
50W	6000K	PLHM01506	-	2390	X	54	X	88	9000

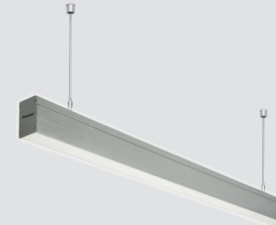
Note : 15W is Compatible with 25W & 18W is Compatible with 35W for proper uniformity.

6

COMMERCIAL LIGHTING

Linear Fixture

Aesthetically designed LED linear fixture suitable for suspended updown type with housing made of high quality extruded aluminium alloy including die-cast aluminium end cap. These series are also available with seamless continuous lighting system ensuring no visible dark spot or light leakages with IP20.



Suspended Linear Up Down Type

Wattage	CCT	Product Code	Cut Out Dimension (mm)	Product Dimension (mm)					MRP (₹)
				L/Dia	X	W/Dia	X	H	
40W	3000K	PLHM04403	-	1200	X	54	X	88	7480
40W	4000K	PLHM04404	-	1200	X	54	X	88	7480
40W	6000K	PLHM04406	-	1200	X	54	X	88	7480
65W	3000K	PLHM04653	-	1200	X	54	X	88	10370
65W	4000K	PLHM04654	-	1200	X	54	X	88	10370
65W	6000K	PLHM04656	-	1200	X	54	X	88	10370

Aesthetically designed LED linear fixture with housing made of high quality extruded aluminium alloy including die-cast aluminium end cap. These series are also available with seamless continuous lighting system ensuring no visible dark spot or light gaps with IP20.



Recessed Linear Fixture

Wattage	CCT	Product Code	Cut Out Dimension (mm)	Product Dimension (mm)					MRP (₹)
				L/Dia	X	W/Dia	X	H	
15W	3000K	PLRM01153	625 x 55	620	X	69	X	71	4000
15W	4000K	PLRM01154	625 x 55	620	X	69	X	71	4000
15W	6000K	PLRM01157	625 x 55	620	X	69	X	71	4000
25W	3000K	PLRM01253	1205 x 55	1200	X	69	X	71	5610
25W	4000K	PLRM01254	1205 x 55	1200	X	69	X	71	5610
25W	6000K	PLRM01256	1205 x 55	1200	X	69	X	71	5610
18W	3000K	PLRM01183	625 x 55	620	X	69	X	71	4500
18W	4000K	PLRM01184	625 x 55	620	X	69	X	71	4500
18W	6000K	PLRM01186	625 x 55	620	X	69	X	71	4500
35W	3000K	PLRM01353	1205 x 55	1200	X	69	X	71	5950
35W	4000K	PLRM01354	1205 x 55	1200	X	69	X	71	5950
35W	6000K	PLRM01356	1205 x 55	1200	X	69	X	71	5950

Note : 15W is Compatible with 25W & 18W is Compatible with 35W for proper uniformity.

7

COMMERCIAL LIGHTING

Aluminium Down light

Recess mounting circular LED downlight luminaire with aluminium housing in white PC finish, specially designed heat sink, anti-glare diffuser and integrated energy efficient electronic driver with IP44.



Down Light

Wattage	CCT	Product Code	Cut Out Dimension (mm)	Product Dimension (mm)					MRP (₹)
				L/Dia	X	W/Dia	X	H	
5W	3000K	PDLM03053	70	92	X	-	X	63.5	755
5W	4000K	PDLM03054	70	92	X	-	X	63.5	755
5W	6500K	PDLM03057	70	92	X	-	X	63.5	755
8W	3000K	PDLM03083	92	113	X	-	X	72.5	945
8W	4000K	PDLM03084	92	113	X	-	X	72.5	945
8W	6500K	PDLM03087	92	113	X	-	X	72.5	945
12W	3000K	PDLM03123	130	145	X	-	X	75	1130
12W	4000K	PDLM03124	130	145	X	-	X	75	1130
12W	6500K	PDLM03127	130	145	X	-	X	75	1130
14W	3000K	PDLM03143	150	174	X	-	X	78.5	1415
14W	4000K	PDLM03144	150	174	X	-	X	78.5	1415
14W	6500K	PDLM03147	150	174	X	-	X	78.5	1415
20W	3000K	PDLM03203	205	244	X	-	X	94.5	1890
20W	4000K	PDLM03204	205	244	X	-	X	94.5	1890
20W	6500K	PDLM03207	205	244	X	-	X	94.5	1890

COMMERCIAL LIGHTING

PC Down light

Recess mounting circular LED downlight luminaire with PC housing, anti-glare diffuser and separate energy efficient electronic driver with IP20.



Down Light

Wattage	CCT	Product Code	Cut Out Dimension (mm)	Product Dimension (mm)					MRP (₹)
				L/Dia	X	W/Dia	X	H	
5W	3000K	PDLM12053	102	120	X	120	X	30	600
5W	4000K	PDLM12054	102	120	X	120	X	30	600
5W	6500K	PDLM12057	102	120	X	120	X	30	600
10W	3000K	PDLM12103	128	150	X	150	X	30	650
10W	4000K	PDLM12104	128	150	X	150	X	30	650
10W	6500K	PDLM12107	128	150	X	150	X	30	650
15W	3000K	PDLM12153	178	198	X	198	X	30	700
15W	4000K	PDLM12154	178	198	X	198	X	30	700
15W	6500K	PDLM12157	178	198	X	198	X	30	700
20W	3000K	PDLM12203	178	198	X	198	X	30	750
20W	4000K	PDLM12204	178	198	X	198	X	30	750
20W	6500K	PDLM12207	178	198	X	198	X	30	750

RETAIL & HOSPITALITY LIGHTING

RETAIL & HOSPITALITY LIGHTING

COB Down light

Recess mounting circular COB LED downlight with die-cast aluminium housing in white powder coating finish, specially designed heat sink, anti-glare diffuser and separate energy efficient electronic driver with IP20.



COB Down Light - 24°

Wattage	CCT	Product Code	Cut Out Dimension (MM)	Product Dimension (mm)					MRP (₹)
				L/Dia	X	W/Dia	X	H	
3W	3000K	PDLM07033	55	68	X	-	X	66	620
3W	6000K	PDLM07036	55	68	X	-	X	66	620
7W	3000K	PDLM07073	75	85	X	-	X	62	835
7W	6000K	PDLM07076	75	85	X	-	X	62	835

Note: 4000K available on request



COB Down Light - 36°

Wattage	CCT	Product Code	Cut Out Dimension (MM)	Product Dimension (mm)					MRP (₹)
				L/Dia	X	W/Dia	X	H	
15W	3000K	PDLM08153	95	110	X	-	X	85	1225
15W	6000K	PDLM08156	95	110	X	-	X	85	1225

Note: 4000K available on request



COB Down Light - 60°

Wattage	CCT	Product Code	Cut Out Dimension (MM)	Product Dimension (mm)					MRP (₹)
				L/Dia	X	W/Dia	X	H	
15W	3000K	PDLM09153	95	110	X	-	X	85	1225
15W	6000K	PDLM09156	95	110	X	-	X	85	1225
25W	3000K	PDLM09253	125	140	X	-	X	120	2170
25W	6000K	PDLM09256	125	140	X	-	X	120	2170
30W	3000K	PDLM09303	145	160	X	-	X	125	2550
30W	6000K	PDLM09306	145	160	X	-	X	125	2550
40W	3000K	PDLM09403	160	180	X	-	X	127	3730
40W	6000K	PDLM09406	160	180	X	-	X	127	3730

Note: 4000K available on request

RETAIL & HOSPITALITY LIGHTING

Down Light

Water Proof Recess mounting Circular LED luminaire with die-cast aluminum housing in white electrophoresis finish, specially designed heat sink and separate energy efficient electronic driver with IP65.



IP65 Down Light

Wattage	CCT	Product Code	Cut Out Dimension (mm)	Product Dimension (mm)					MRP (₹)
				L/Dia	X	W/Dia	X	H	
8W	3000K	ADL27R083	50	60	X	60	X	65	2265

Recess Mounting Adjustable type Circular LED luminaire with die-cast aluminum housing in white electrophoresis finish, specially designed heat sink and separate energy efficient electronic driver with IP20.



Adjustable Down Light

Wattage	CCT	Product Code	Cut Out Dimension (mm)	Product Dimension (mm)					MRP (₹)
				L/Dia	X	W/Dia	X	H	
28W	3000K	ADL17R283	125	125	X	125	X	154	5005
28W	4000K	ADL17R284	125	125	X	125	X	154	5005



Trimless Down Light - Adjustable

Wattage	CCT	Product Code	Cut Out Dimension (mm)	Product Dimension (mm)					MRP (₹)
				L/Dia	X	W/Dia	X	H	
12W	3000K	ADL21R123	90	100	X	100	X	120	2835

RETAIL & HOSPITALITY LIGHTING

Down Light

Recess Mounting Glareless Adjustable type Circular LED luminaire with die-cast aluminum housing in white electrophoresis finish, specially designed heat sink and separate energy efficient electronic driver with IP20.



Trim Down Light - Adjustable

Wattage	CCT	Product Code	Cut Out Dimension (mm)	Product Dimension (mm)					MRP (₹)
				L/Dia	X	W/Dia	X	H	
15W	2700K	ADL21R152	130	140	X	140	X	150	3965
15W	3000K	ADL21R153	130	140	X	140	X	150	3965



Pin Hole Adjustable Down Light

Wattage	CCT	Product Code	Cut Out Dimension (mm)	Product Dimension (mm)					MRP (₹)
				L/Dia	X	W/Dia	X	H	
12W	3000K	ADL25R123	80	90	X	90	X	105	2835

Track Light

Aesthetically designed LED track light luminaire equipped with aluminium die-cast housing, exclusively designed heat sink suitable with track (IP20)



Track Light

Wattage	CCT	Product Code	Cut Out Dimension (mm)	Product Dimension (mm)					MRP (₹)
				L/Dia	X	W/Dia	X	H	
10W	3000K	ATRO20103	-	186	X	60	X	212	3375
10W	6000K	ATRO20106	-	186	X	60	X	212	3375
20W	3000K	ATRO20203	-	186	X	90	X	245	6000
20W	6000K	ATRO20206	-	186	X	90	X	245	6000

Track Light Accessories

Product Code	Product Dimension					MRP ₹
	L/Dia	X	W/Dia	X	H	
ATRO2R000	1000	X	35	X	15	1600
ATRO2S000	1000	X	65	X	15	1400

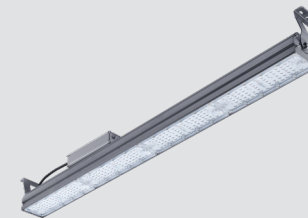
INDUSTRIAL LIGHTING

INDUSTRIAL LIGHTING

NEW

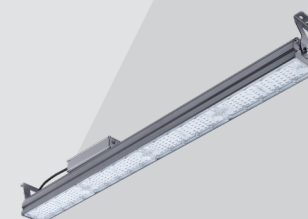
Linear Highbay Light

Aesthetically designed robust and reliable linear LED luminaire with specially designed heat sink and reliable non-integrated IP 67 energy efficient electronic driver. IP 65 linear highbay, provide a highly productive and safe environment to increase work efficiency.



Linear Highbay Light - 60°

Wattage	CCT	Product Code	Cut Out Dimension (mm)	Product Dimension (mm)					MRP (₹)
				L/Dia	X	W/Dia	X	H	
90W	5700K	PBYM07908	-	490	X	80	X	123	16500
120W	5700K	PBYM07CD8	-	730	X	80	X	123	22000
150W	5700K	PBYM07FG8	-	970	X	80	X	123	27500
180W	5700K	PBYM07KL8	-	970	X	80	X	123	33000



Linear Highbay Light - 90°

Wattage	CCT	Product Code	Cut Out Dimension (mm)	Product Dimension (mm)					MRP (₹)
				L/Dia	X	W/Dia	X	H	
90W	5700K	PBYM08908	-	490	X	80	X	123	16500
120W	5700K	PBYM08CD8	-	730	X	80	X	123	22000
150W	5700K	PBYM08FG8	-	970	X	80	X	123	27500
180W	5700K	PBYM08KL8	-	970	X	80	X	123	33000

INDUSTRIAL LIGHTING

NEW

Circular Bay Light

Ascetically designed robust LED high bay equipped with specially designed heat sink and reliable integrated energy efficient driver to meet the different requiment across Industrial application.



Circular Bay Light - 60°

Wattage	CCT	Product Code	Cut Out Dimension (mm)	Product Dimension (mm)					MRP (₹)
				L/Dia	X	W/Dia	X	H	
80W	5700K	PBYM09808	-	318.5	X	318.5	X	171	11900
100W	5700K	PBYM09AB8	-	318.5	X	318.5	X	171	13200
120W	5700K	PBYM09CD8	-	318.5	X	318.5	X	171	16500
150W	5700K	PBYM09FG8	-	318.5	X	318.5	X	171	17900
180W	5700K	PBYM09KL8	-	318.5	X	318.5	X	171	19600



Circular Bay Light - 90°

Wattage	CCT	Product Code	Cut Out Dimension (mm)	Product Dimension (mm)					MRP (₹)
				L/Dia	X	W/Dia	X	H	
80W	5700K	PBYM10808	-	318.5	X	318.5	X	171	11900
100W	5700K	PBYM10AB8	-	318.5	X	318.5	X	171	13200
120W	5700K	PBYM10CD8	-	318.5	X	318.5	X	171	16500
150W	5700K	PBYM10FG8	-	318.5	X	318.5	X	171	17900
180W	5700K	PBYM10KL8	-	318.5	X	318.5	X	171	19600

INDUSTRIAL LIGHTING

Suspended High Bay

Ascetically designed robust LED high bay equipped with specially designed heat sink and reliable integrated energy efficient electronic driver to meet the different lighting requirement across industrial application with IP65.



Suspended High Bay - 60°

Wattage	CCT	Product Code	Cut Out Dimension (mm)	Product Dimension (mm)					MRP (₹)
				L/Dia	X	W/Dia	X	H	
90W	4000K	PBYM01904	-	345	X	-	X	384	12285
90W	6500K	PBYM01907	-	345	X	-	X	384	12285
120W	4000K	PBYM01CD4	-	345	X	-	X	384	15120
120W	6500K	PBYM01CD7	-	345	X	-	X	384	15120
150W	4000K	PBYM01FG4	-	345	X	-	X	413	18900
150W	6500K	PBYM01FG7	-	345	X	-	X	413	18900
180W	4000K	PBYM01KL4	-	345	X	-	X	463	23150
180W	6500K	PBYM01KL7	-	345	X	-	X	463	23150

Note: 3000K available on request



Suspended High Bay - 90°

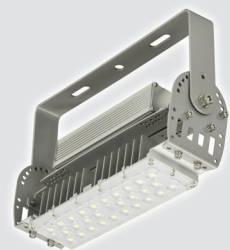
Wattage	CCT	Product Code	Cut Out Dimension (mm)	Product Dimension (mm)					MRP (₹)
				L/Dia	X	W/Dia	X	H	
90W	4000K	PBYM02904	-	345	X	-	X	384	12285
90W	6500K	PBYM02907	-	345	X	-	X	384	12285
120W	4000K	PBYM02CD4	-	345	X	-	X	384	15120
120W	6500K	PBYM02CD7	-	345	X	-	X	384	15120
150W	4000K	PBYM02FG4	-	345	X	-	X	413	18900
150W	6500K	PBYM02FG7	-	345	X	-	X	413	18900
180W	4000K	PBYM02KL4	-	345	X	-	X	463	23150
180W	6500K	PBYM02KL7	-	345	X	-	X	463	23150

Note: 3000K available on request

INDUSTRIAL LIGHTING

Modular High Bay Light

Aesthetically designed robust LED high bay light, equipped with specially designed heat sink and reliable non-integrated energy efficient electronic driver to meet the different lighting requirement across industrial application with IP66.



Modular High Bay Light - 60°

Wattage	CCT	Product Code	Cut Out Dimension (mm)	Product Dimension (mm)					MRP (₹)
				L/Dia	X	W/Dia	X	H	
50W	6500K	PBYM04507	-	355	X	80	X	265	10000
90W	6500K	PBYM04907	-	355	X	162	X	265	14000
120W	6500K	PBYM04CD7	-	355	X	162	X	265	17000
150W	6500K	PBYM04FG7	-	355	X	250	X	265	22000
180W	6500K	PBYM04KL7	-	355	X	250	X	265	26500



Modular High Bay Light - 90°

Wattage	CCT	Product Code	Cut Out Dimension (mm)	Product Dimension (mm)					MRP (₹)
				L/Dia	X	W/Dia	X	H	
50W	6500K	PBYM05507	-	355	X	80	X	265	10000
90W	6500K	PBYM05907	-	355	X	162	X	265	14000
120W	6500K	PBYM05CD7	-	355	X	162	X	265	17000
150W	6500K	PBYM05FG7	-	355	X	250	X	265	22000
180W	6500K	PBYM05KL7	-	355	X	250	X	265	26500



Modular High Bay Light - 120°

Wattage	CCT	Product Code	Cut Out Dimension (mm)	Product Dimension (mm)					MRP (₹)
				L/Dia	X	W/Dia	X	H	
50W	6500K	PBYM06507	-	355	X	80	X	265	10000
90W	6500K	PBYM06907	-	355	X	162	X	265	14000
120W	6500K	PBYM06CD7	-	355	X	162	X	265	17000
150W	6500K	PBYM06FG7	-	355	X	250	X	265	22000
180W	6500K	PBYM06KL7	-	355	X	250	X	265	26500

Note: 3000K & 4000K available on request for modular bay light

INDUSTRIAL LIGHTING

NEW

Cleanroom Bottom Opening

IP 54, dust free & Zero maintenance LED Clean Room Bottom opening luminarie with CRCA powered coating housing, anti glare diffuser with potentiometric integrated energy efficient electronic driver.



Cleanroom Bottom Opening

Wattage	CCT	Product Code	Cut Out Dimension (mm)	Product Dimension (mm)					MRP (₹)
				L/Dia	X	W/Dia	X	H	
45W	5700K	PCRM01458	575 x 575	655	X	600	X	75	6950
45W	4700K	PCRM01454	576 x 575	655	X	600	X	75	6950
60W	5700K	PCRM01608	577 x 575	655	X	600	X	75	8750
60W	4700K	PCRM01604	578 x 575	655	X	600	X	75	8750

NEW

Cleanroom Top Opening

IP 65, dust free & Zero maintenance LED Clean Room Top opening luminarie with CRCA powered coating housing, anti glare diffuser with potentiometric integrated energy efficient electronic driver.



Cleanroom Top Opening

Wattage	CCT	Product Code	Cut Out Dimension (mm)	Product Dimension (mm)					MRP (₹)
				L/Dia	X	W/Dia	X	H	
45W	5700K	PCRM02458	570 x 570	600	X	600	X	75	On Request
45W	4700K	PCRM02454	570 x 570	600	X	600	X	75	On Request
60W	5700K	PCRM02608	570 x 570	600	X	600	X	75	On Request
60W	4700K	PCRM02604	570 x 570	600	X	600	X	75	On Request

Note : IP65 from front after installation

INDUSTRIAL LIGHTING

Industrial Batten - IP65

LED Batten with inbuilt heat sink, polycarbonate housing equipped with anti-glare diffuser and energy efficient electronic driver with IP65.

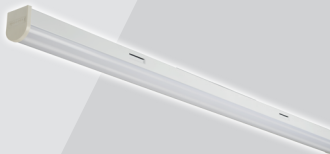


Industrial Batten - IP65

Wattage	CCT	Product Code	Cut Out Dimension (mm)	Product Dimension (mm)					MRP (₹)
				L/Dia	X	W/Dia	X	H	
20W	4000K	PBTM05204	-	1140	X	75	X	70	3530
20W	6500K	PBTM05207	-	1140	X	75	X	70	3530
40W	4000K	PBTM05404	-	1140	X	75	X	70	4460
40W	6500K	PBTM05407	-	1140	X	75	X	70	4460

Industrial Batten - IP20

LED CRCA Batten with inbuilt heat sink, anti-glare polycarbonate diffuser and energy efficient electronic driver with IP20.



Industrial Batten - IP20

Wattage	CCT	Product Code	Cut Out Dimension (mm)	Product Dimension (mm)					MRP (₹)
				L/Dia	X	W/Dia	X	H	
20W	4000K	PBTM04204	-	1183	X	53	X	68	3210
20W	6500K	PBTM04207	-	1183	X	53	X	68	3210
40W	4000K	PBTM04404	-	1183	X	53	X	68	3685
40W	6500K	PBTM04407	-	1183	X	53	X	68	3685

Note: *Pull cord type available on request

INDUSTRIAL LIGHTING

NEW

Well Glass

Aesthetically designed robust LED well glass, equipped with specially designed heat sink and reliable integrated energy efficient electronic driver to meet the different lighting requirement across industrial application with IP65.



Well Glass

Wattage	CCT	Product Code	Cut Out Dimension (mm)	Product Dimension (mm)			MRP (₹)
				W/Dia	x	H	
35W	5700K	PWGM01358	-	165	X	200	4000
35W	5700K	PWGM02358	-	165	X	200	4000
70W	5700K	PWGM01708	-	215	X	270	7000
70W	5700K	PWGM02708	-	215	X	270	7000

Note: PWGM02358 & PWGM02708 with milky diffuser

Bulk Head

Ceiling and Wall mount LED bulk head serves as an excellent energy efficient alternative to CFL/ incandescent bulkhead luminaires with IP65.



Bulk Head

Wattage	CCT	Product Code	Cut Out Dimension (mm)	Product Dimension (mm)					MRP (₹)
				L/Dia	X	W/Dia	X	H	
10W	6500K	PBHM01107	-	232	X	105	X	50	1225

Note: 3000K available on request

OUTDOOR LIGHTING

OUTDOOR LIGHTING

LED Street Light

LED Street Light with innovative & aesthetic & robust design with aluminium heat sink and toughened glass (IP66)



LED Street Light Low Wattage

Wattage	CCT	Product Code	Pole Outer Dia	Cut Out Dimension (mm)					MRP (₹)
				L/Dia	X	W/Dia	X	H	
15W	6500K	PSTM01157	30-35 mm	270	X	80	X	66	2120
25W	6500K	PSTM01257	30-35 mm	330	X	80	X	70	3045
45W	6500K	PSTM01457	30-35 mm	330	X	80	X	70	4710
60W	6500K	PSTM01607	40-45 mm	410	X	121	X	80	6800
75W	6500K	PSTM01757	40-45 mm	410	X	121	X	80	8500

LED Street Light with innovative & aesthetic & robust design with aluminium heat sink and toughened glass with IP66



LED Street Light High Wattage

Wattage	CCT	Product Code	Pole Outer Dia	Product Dimension (MM)					MRP (₹)
				L/Dia	X	W/Dia	X	H	
70W	5700K	PSTM08708	52 mm	364	X	182	X	102	10000
90W	5700K	PSTM08908	52 mm	364	X	182	X	102	11500
120W	5700K	PSTM08CD8	54 mm	475	X	230	X	108	14000
150W	5700K	PSTM08FG8	60 mm	556	X	262	X	116	17000
180W	5700K	PSTM08KL8	65 mm	550	X	262	X	122	21500

OUTDOOR LIGHTING

Flood Light

Aesthetically designed LED Flood Light luminaire equipped with specially designed heat sink, reliable integrated energy efficient electronic driver with IP65.



Flood Light

Wattage	CCT	Product Code	Cut Out Dimension (mm)	Product Dimension (mm)					MRP (₹)
				L/Dia	X	W/Dia	X	H	
50W	3000K	PFLM01503	-	311	X	220	X	50	4535
50W	6000K	PFLM01506	-	311	X	220	X	50	4535
90W	3000K	PFLM01903	-	355	X	245	X	55	8030
90W	6000K	PFLM01906	-	355	X	245	X	55	8030
120W	3000K	PFLM01CD3	-	403	X	295	X	60	9920
120W	6000K	PFLM01CD6	-	403	X	295	X	60	9920
150W	3000K	PFLM01FG3	-	431	X	330	X	60	13700
150W	6000K	PFLM01FG6	-	431	X	330	X	60	13700
180W	3000K	PFLM01KL3	-	470	X	360	X	60	15590
180W	6000K	PFLM01KL6	-	470	X	360	X	60	15590
200W	3000K	PFLM01MN3	-	470	X	360	X	60	17955
200W	6000K	PFLM01MN6	-	470	X	360	X	60	17955

Bollard Light

Decorative & cylindrical shape LED Bollard Light with integrated LED Driver offers comfortable softlight, high durability & IP65.



Bollard Light

Wattage	CCT	Product Code	Cut Out Dimension (mm)	Product Dimension (mm)					MRP (₹)
				L/Dia	X	W/Dia	X	H	
6W	3000K	ABD010063	-	90	X	90	X	800	10000
6W	4000K	ABD010064	-	90	X	90	X	800	10000
6W	6000K	ABD010066	-	90	X	90	X	800	10000

OUTDOOR LIGHTING

Step Light

Robust and reliable LED Step Light with aluminum housing offers uniform light distribution, high durability and IP65.



Step Light

Wattage	CCT	Product Code	Cut Out Dimension (mm)	Product Dimension (mm)					MRP (₹)
				L/Dia	X	W/Dia	X	H	
3W	4000K	ASE010034	58 x 114.8	127	X	70	X	50.5	3000
3W	6000K	ASE010036	58 x 114.8	127	X	70	X	50.5	3000

LED Spike

Stylish, robust, reliable Spike Light/Bush Light with aluminum housing offers uniform light distribution with IP65 Protection suitable to provide accent lighting for variety of application with IP65.



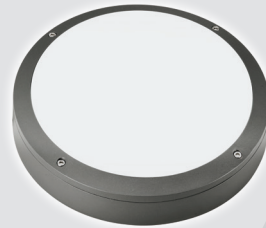
LED Spike

Wattage	CCT	Product Code	Cut Out Dimension (mm)	Product Dimension (mm)					MRP (₹)
				L/Dia	X	W/Dia	X	H	
6W	3000K	ASK010063	-	60	X	113	X	322	5000
6W	4000K	ASK010066	-	60	X	113	X	322	5000
6W	Red	ASK01006R	-	60	X	113	X	322	5000
6W	Green	ASK01006G	-	60	X	113	X	322	5000
6W	Amber	ASK01006A	-	60	X	113	X	322	5000

OUTDOOR LIGHTING

LED Wall Mount

Surface mounted decorative & reliable Wall Mount light with aluminum housing offers uniform light distribution with IP65.



LED Wall Mount

Wattage	CCT	Product Code	Cut Out Dimension (mm)	Product Dimension (mm)					MRP (₹)
				L/Dia	X	W/Dia	X	H	
10W	3000K	AWB010103	-	276	X	276	X	75	6500
10W	4000K	AWB010104	-	276	X	276	X	75	6500
10W	6000K	AWB010106	-	276	X	276	X	75	6500

LED Post Top

Decorative, robust and reliable LED Post Top with aluminum housing offers uniform light distribution, high durability and IP65.



LED Post Top

Wattage	CCT	Product Code	Cut Out Dimension (mm)	Product Dimension (mm)					MRP (₹)
				L/Dia	X	W/Dia	X	H	
25W	3000K	APT010253	-	450	X	442	X	495	30000
25W	4000K	APT010254	-	450	X	442	X	495	30000
40W	3000K	APT010403	-	450	X	442	X	495	38000
40W	4000K	APT010404	-	450	X	442	X	495	38000

OUTDOOR LIGHTING

LED Up Down

Surface mounted decorative LED Up Down light with aluminum housing offers uniform light distribution with IP65 protection suitable for wall mount application.



LED Up Down - Square

Wattage	CCT	Product Code	Cut Out Dimension (mm)	Product Dimension (mm)					MRP (₹)
				L/Dia	X	W/Dia	X	H	
4W	3000K	AUD010043	-	84	X	70	X	180	7500
4W	4000K	AUD010044	-	84	X	70	X	180	7500
4W	6000K	AUD010046	-	84	X	70	X	180	7500

Surface mounted decorative LED Up Down light with aluminum housing offers uniform light distribution with IP65 protection suitable for wall mount application.



LED Up Down - Circular

Wattage	CCT	Product Code	Cut Out Dimension (mm)	Product Dimension (mm)					MRP (₹)
				L/Dia	X	W/Dia	X	H	
6W	3000K	AUD020063	-	60	X	60	X	110	8000
6W	4000K	AUD020064	-	60	X	60	X	110	8000
6W	6000K	AUD020066	-	60	X	60	X	110	8000

OUTDOOR LIGHTING

LED In-Ground

Stylish, robust & reliable In-Ground light with aluminum housing offers uniform light distribution with IP67.



LED In-Ground

Wattage	CCT	Product Code	Cut Out Dimension (mm)	Product Dimension (mm)					MRP (₹)
				L/Dia	X	W/Dia	X	H	
3W	3000K	AGL010033	90	115	X	115	X	175	6500
3W	4000K	AGL010036	90	115	X	115	X	175	6500
3W	Red	AGL01003R	90	115	X	115	X	175	6500
3W	Green	AGL01003G	90	115	X	115	X	175	6500
3W	Amber	AGL01003A	90	115	X	115	X	175	6500
9W	3000K	AGL010093	140	160	X	160	X	190	9500
9W	4000K	AGL010096	140	160	X	160	X	190	9500
9W	Red	AGL01009R	140	160	X	160	X	190	9500
9W	Green	AGL01009G	140	160	X	160	X	190	9500
9W	Amber	AGL01009A	140	160	X	160	X	190	9500
18W	3000K	AGL010183	140	160	X	160	X	190	11500
18W	4000K	AGL010186	140	160	X	160	X	190	11500
18W	Red	AGL01018R	140	160	X	160	X	190	11500
18W	Green	AGL01018G	140	160	X	160	X	190	11500
18W	Amber	AGL01018A	140	160	X	160	X	190	11500

PHASED OUT PRODUCTS

Industrial Lighting	Commercial Lighting	Commercial Lighting	Commercial Lighting	Commercial Lighting	Commercial Lighting	Commercial Lighting	Commercial Lighting
ABT021207	ADL01R154	ADL03R253	ABT018106	BU020036	ADL11R206	APA01R034	PPAM04206
ABY040FG7	ADL01R203	ADL03R256	ABT018103	BU021096	ADL12R052	APA02R204	PPAM04053
ABY030FG7	ADL01R123	ADL06R403	ABT018153	ABU021126	ADL12R056	APA01R203	ASP010023
ABY040907	ADL03R053	ADL05R256	ABT018203	ABU021156	ADL12R102	APA02R203	ADL10R152
ABY040CD7	ADL01R056	ADL01R054	ABT019204	ABU021036	ADL12R106	APA01R204	ASP020023
AFL020906	ADL01R076	ADL01R073	ABT019104	ABU021056	ADL12R152	APA01R073	AST01A256
	ADL07R106	ADL03R073	PBUM02077	ABU021076	ADL12R156	APA02R154	AST01A456
	ADL07R206	ADL05R253	ABT021207	PBUM04207	ADL12R202	PPAM03053	PBLM02363
Commercial Lighting	ADL01R103	ADL01R124	BUM02097	APA04R200	ADL12R206	PPAM03054	PBLM02364
ATR03U000	ADL01R126	ADL07R074	ABU021037	APA03R200	ADL11R107	PPAM03056	PBLM02367
ATR04U000	ADL06R406	ADL07R073	ABU021157	APA04R150	ADL11R157	PPAM04053	PBLM04403
ASL0S2323	ADL01R156	ADL07R103	BUM02057	APA03R070	ADL11R053	PPAM04054	PBLM04404
ABL21E164	ADL01R153	ADL07R153	ABU021127	APA03R150	ADL11R057	PPAM04056	PBLM04407
ABL21E166	ADL03R076	ADL07R203	ABU021097	APA04R070	APA02R206	PPAM03103	PBLM03403
ABL13B364	ADL05R254	ADL08R053	ABU021057	ADL13R154	APA01R206	PPAM03104	PBLM03404
ABL24E366	ADL07R076	ADL08R054	BU021093	ADL09R103	APA02R156	PPAM03106	PBLM03407
ABL24B364	ADL08R156	ADL08R103	ABU021073	ADL09R154	APA02R076	PPAM04103	
ABL24B366	ADL01R106	ADL08R203	BU021033	ADL09R053	APA02R153	PPAM04104	
ABL24E364	ADL01R053	ADL08R204	ABU021153	ADL10R052	APA02R036	PPAM04106	
ABL32D364	ADL01R206	ATR010083	BU021053	ADL09R052	APA01R036	PPAM03153	
ABL32D366	ADL08R206	ATR010086	ABU021123	ADL09R102	APA01R076	PPAM03154	
ABL34D364	ADL01R104	ATR010166	BU020076	ADL10R102	APA02R073	PPAM03156	
ABL34D366	ADL07R154	ATU020096	ABU021077	ADL09R152	APA02R033	PPAM04153	
ABL12B403	ADL08R106	ABT018156	BU020053	ADL11R052	APA01R154	PPAM04154	
ABL12E404	ADL07R104	ABT019206	BU020056	ADL11R056	APA01R156	PPAM04156	
ABL12E406	ADL07R204	ABT019106	BU020073	ADL11R106	APA01R074	PPAM03203	
ABL13B366	ADL08R056	ABT019203	BU020077	ADL11R102	APA01R153	PPAM03204	
ABL12D406	ADL01R074	ABT018206	BU020057	ADL11R152	APA01R033	PPAM03206	
ABL13B367	ADL01R204	ABT019103	BU020033	ADL11R156	APA02R074	PPAM04203	
ABY010303				ADL11R202	APA02R034	PPAM04204	

HEAD/REGIONAL OFFICES

WEST (H.O.)

Anchor Electricals Pvt. Ltd.
3rd Floor, B Wing, I-Think Techno Campus,
Pokhran Road No. 2, Thane (W), Thane - 400 607
Maharashtra Tel: 022 30418888

NORTH-1

Anchor Electricals Pvt. Ltd.
SCO-40, 1st Floor, NAC Manimajra,
Chandigarh - 160101 Tel - 0172 3255715

STATE/SALES OFFICES

NORTH-1

JAMMU

Anchor Electricals Pvt. Ltd.
85/1, 1st Floor, Trikuta Nagar,
Jammu - 180 012 Tel: 0191 2470735 / 36

CHANDIGARH

Anchor Electricals Pvt. Ltd.
S.C.O - 40 1st floor , NAC Manimajra,
Chandigarh -160101.

NORTH-2

JAIPUR

Anchor Electricals Pvt. Ltd.
224-225, 2nd Floor, Ganpati Plaza,
M.I. Road, Jaipur, Rajasthan - 302 001
Tel: 0141 3007666 / 2331369

NEW DELHI

Anchor Electricals Pvt. Ltd.
6th Floor, Plot No-7, TDI Centre,
Jasola District Centre, New Delhi-110025.

EAST

GUWAHATI

Anchor Electricals Pvt. Ltd.
2A, 2nd Floor, Dihang Arcade,
ABC, G.S. Road, Guwahati, Pin-781005.

BHUBANESWAR

Anchor Electricals Pvt. Ltd.
2nd Floor, Creative Plaza,
Rasulgarh Square,
Bhubaneswar-751010. Odisha..

EAST

Anchor Electricals Pvt. Ltd.
4th Floor, Block " C ", Apeejay House,
15, Park Street, Kolkata, West Bengal - 700 016
Tel: 033 32219196

NORTH-2

Anchor Electricals Pvt. Ltd.
6th Floor, TDI Centre, Jasola District,
New Delhi - 110 025 Tel: 011 46006400

PUNJAB

Anchor Electricals Pvt. Ltd.
B-20/ 2813 / 13-A, 3rd Floor, Ranjit Tower,
Pakhawal Road , Gurdev Nagar,
Ludhiana - 141001 (Punjab) Tel: 0161 4630796

PARWANOO

Anchor Electricals Pvt. Ltd.
S.C.O - 40 1st floor , NAC Manimajra,
Chandigarh -160101.

LUCKNOW

Anchor Electricals Pvt. Ltd.
1st Floor, Tiwari Puram No. 1,
Main Kanpur Road, Nr. Hind Petrol Pump,
Opp. UCO Bank, Lucknow - 226023.

FARIDABAD

Anchor Electricals Pvt. Ltd.
6th Floor, Plot No-7, TDI Centre,
Jasola District Centre, New Delhi-110025.

PATNA

Anchor Electricals Pvt. Ltd.
F-1, 1st Floor, Gitanjali Palace,
Jamal Road, Patna, Bihar - 800001.

SILIGURI

Anchor Electricals Pvt. Ltd.
1st Floor, Hanshara House,
Beside City Mall (Bazar Kolkata),
Sevoke Road, Siliguri - 734001.

SOUTH

Anchor Electricals Pvt. Ltd.
No. 8-12, 3rd Floor, Prestige Nebula - II,
Infantry Road, Bengaluru, Karnataka - 560 001
Tel: 080 30284400 - 40

UTTARAKHAND

Anchor Electricals Pvt. Ltd.
Khasra No: 332-333-335 & 339, 1st Floor,
Main Saharanpur Road, Niranjanpur,
Opp. Institute of Hotel Management, HCL Compound,
Dehradun - 248 001 Tel: 0135 3241686

VARANASI

Anchor Electricals Pvt. Ltd.
P.N.204, H.No.C-27/274 A-3,S-1,
2nd Floor Dr. Jai Singh Building,
Maldahiya, Varanasi.

GHAZIABAD

Anchor Electricals Pvt. Ltd.
6th Floor, Plot No-7, TDI Centre,
Jasola District Centre, New Delhi-110025.

RANCHI

Anchor Electricals Pvt. Ltd.
Office No.:-509 , R.R. TOWER , 5th Floor ,
Opposite Akashwani (Near New Market Chowk) ,
Ratu Road , Ranchi :-834001.

WEST

RAIPUR

Anchor Electricals Pvt. Ltd.
316-317 A To E, 3rd Floor,
Ravi Bhawan, Jaistambh Chowk,
Raipur C.G. - 492001.

BHOPAL

Anchor Electricals Pvt. Ltd.
Plot No-r30, 2nd Floor,
Manya Arcade, Zone-2,
MP Nagar, Bhopal-462011.

NAGPUR

Tapsya, 1st Floor, Near Rahate
Hospital, Adamsha Chowk,
C.A.Road, Nagpur-440008.

SOUTH

HUBLI

Anchor Electricals Pvt. Ltd.
A/122-146, 2nd Floor, Mahalaxmi
Mansion, Above Axis Bank,
New Cotton Market, Deshpande
Nagar, Hubli - 580 029
Tel: 0836 3296694

COIMBATORE

Anchor Electricals Pvt. Ltd.
Balavasantha Complex,
3rd Floor, No:1,
Bharathi Park Cross Road,
Off. NSR Road, Saibaba Colony.
Coimbatore-641 011.

Terms & Conditions:

₹ All prices are subject to general terms and conditions of our business ₹ MRP prices are inclusive of local taxes /VAT and excise duty at the prevailing rates. Prices are subject to change without prior notice ₹ This price list supersedes all our previous price lists. If any dispute should arise, it will be subject to Mumbai jurisdiction ₹ Due to continuous improvements in product design and development and manufacturing methods, the product may differ in some respects from the details provided herein. Current details should therefore be checked with the company

GOA

Anchor Electricals Pvt. Ltd.
Office No 403, 4th Floor,
Gera Emporium II, Patto - Panaji,
Goa, 403001.

INDORE

Anchor Electricals Pvt. Ltd.
318, D.M. Tower, 21/1,
Race Course Road,
Indore - 452001.

PUNE

Anchor Electricals Pvt. Ltd.
The 5th Avenue, 4th Floor, Office A & B ,
Dhole Road, Near Desai Bros Building,
Pune -411001.

CHENNAI

Anchor Electricals Pvt. Ltd.
123,124, Level 3, Isphani Centre,
Nungambakkam High Road,
Chennai 600 034.

HYDERABAD

Anchor Electricals Pvt. Ltd.
#1-8-384/385, Gowra Grand,
Ground Floor, SP Road, Begumpet,
Secunderabad - 500 003.

AHMEDABAD

Anchor Electricals Pvt. Ltd.
405, 4ff, 3rd Eye One Complex,
Opp Honest Restaurant,
Panchvati C.G. Road, Ahmedabad,
Gujarat - 380006.

LOHAR CHAWL

Anchor Electricals Pvt. Ltd.
C-369/482, 2, Tak Wadi,
Kalbadevi Road, Mumbai-400002.

VIJAYAWADA

Anchor Electricals Pvt. Ltd.
#39-10-5, 2nd Floor, V.N.R. Towers,
Opp: Water Tank, Labbipet,
Vijayawada - 520010.

SHOWROOM ADDRESS

BENGALURU

#40/1, Ground Floor, Vittal Mallya Road, Bengaluru - 560 001

SURAT

Anchor Electricals Pvt. Ltd.
403, 4th Floor, Union Trade Center,
B/s. Apple Hospital, Udhna Darwaja,
Ring Road, Surat, Gujarat. 395002.
Ph. 261-3002009.

COCHIN

Anchor Electricals Pvt. Ltd.
K P Varkey & Madathiparambil
Complex, 1st Floor,
Door No. 35/1085D,
Palarivattom, Cochin -25.



Marketed in India by:
Anchor Electricals Pvt. Ltd.
A member of the Panasonic Group

3rd Floor, B Wing,
I-Think Techno Campus,
Pokharan Road No. 2, Thane (W),
Thane 400 607. Maharashtra
T: (9122) 4222 8888
E: info@anchor-world.com
W: www.anchor-world.com