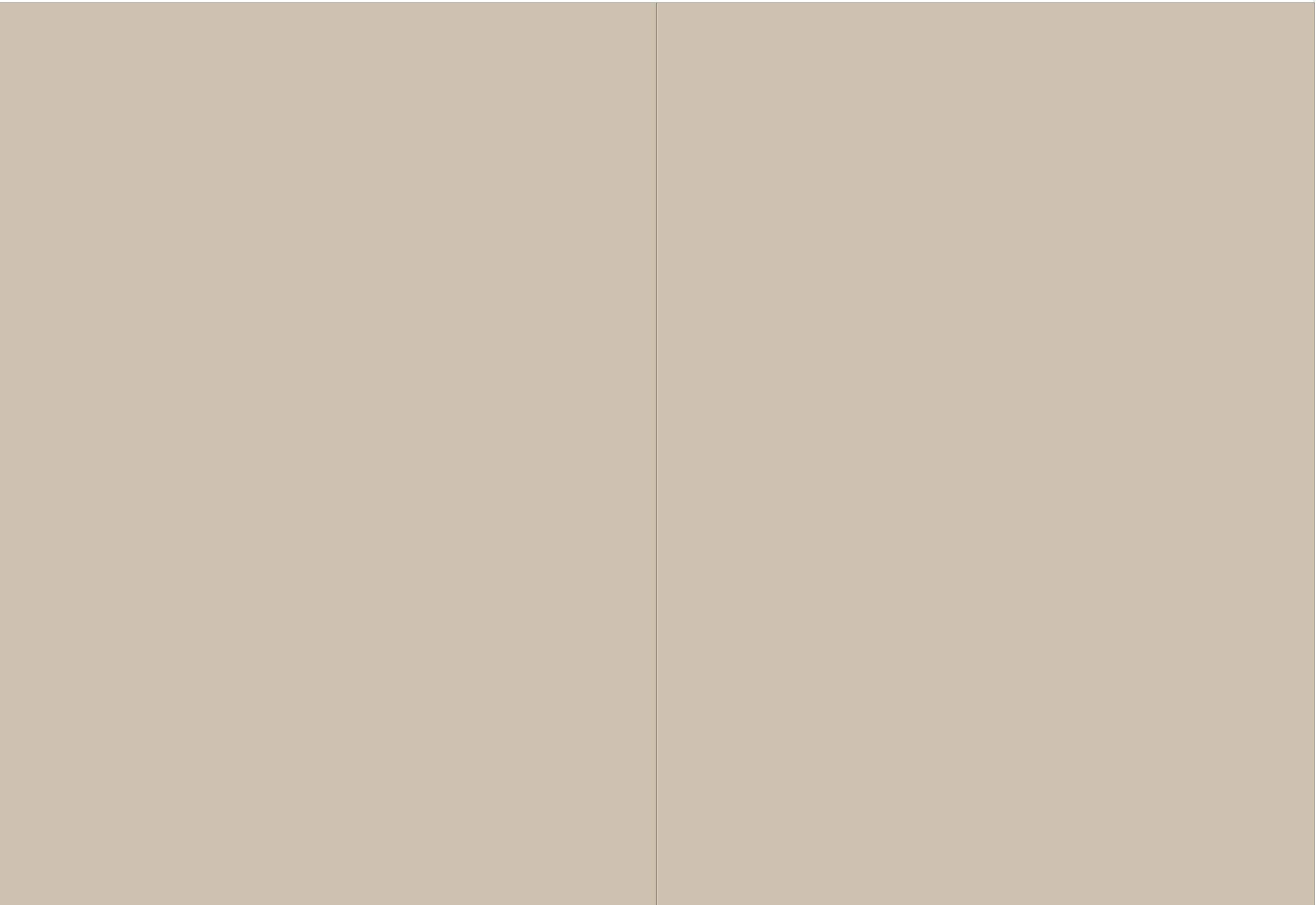


*Because When It Comes To Making  
AN IMPRESSION,  
Everything Else Will Be A Blur.*





# Notes



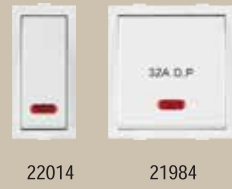
'Roma' is not just a modular switch it is an impression with an origin in the happy memories of millions of Indians. This flagship range of switches and accessories from Anchor caters to the electrical requirements of residences, commercial and hospitality sector alike.

Aesthetically designed, Robust Functionality, Widest Choice in Colored Cover Plates, Accessories, and Collars makes it a Designer's Paradise. Roma range of switches & accessories has evolved matching the modern day expectations of all segments in the electrical building constructions business. Offering unparalleled visual experience, comfortable operation and easy availability in every nook and corner of India, It has been on the forefront of innovation, manufactured with state-of-the-art Japanese technology.

Manufactured in our ISO certified facilities at Daman & Haridwar, the range adheres to the stringent quality requirements of BIS. Trusted by billions of Indians, it continues to innovate and spread the light of joy in the remotest corner of this nation.

# SWITCHES

Switches with **SPARK SHIELD**



Ideal & safe for Air Conditioners, Coolers, Water Pumps, Refrigerators, Mixers and All types of appliances.

# SOCKETS



\* 16A,20A,25A Switch not suggested for geyser load. Instead MCB/Motor Stater must be used.

## SWITCHES

240V~ S.P.

CODE	DESCRIPTION	HSN CODE	MRP ₹	PKD
21011	10AX 1 Way Switch	8536	56/-	20
21022	10AX 2 Way Switch	8536	113/-	20
21033	10AX 1 Way Switch with Neon	8536	116/-	20
30840	10AX 1 Way Switch with Fan Mark	8536	116/-	20
21044	10A Bell Push Switch	8536	117/-	20
21055	10A Bell Push Switch with Neon	8536	126/-	20

## DURA SWITCHES

240V~ S.P.

21510	10AX 1 Way Switch	8536	119/-	10
34964	10AX 1 Way Switch with Neon	8536	134/-	10
21521	10AX 2 Way Switch	8536	134/-	10
21554	10A Bell Push Switch	8536	134/-	10
30715	10A Bell Push Switch with Neon	8536	148/-	10

## SWITCHES

240V~ S.P.

21066	20A 1 Way Switch	8536	126/-	20
21088	20A 2 Way Switch	8536	143/-	20
21077	20A 1 Way Switch with Neon	8536	151/-	20

## DURA SWITCHES

240V~ S.P.

21532	20A 1 Way Switch	8536	163/-	10
21769	20A 1 Way Switch with Neon	8536	178/-	10
21543	20A 2 Way Switch	8536	173/-	10

## POWER SWITCHES - Heavy Duty

240V~ S.P. & D. P.

22014	25A S.P. 1 Way Switch with Neon	8536	191/-	20
21984	32A D.P. 1 Way Switch with Neon (Heavy duty Double Pole Main Switch)	8536	243/-	10

## MOTOR STARTER SWITCH - Overload Protection

240V~ S.P.

20427	20A Motor Starter Switch	8536	432/-	10
20405	25A Motor Starter Switch	8536	432/-	10

## SOCKET WITH SAFETY SHUTTER

240V~ S.P.

20530	6A 2 Pin Socket Round	8536	90/-	20
21667	6A URO 2 Pin Socket	8536	90/-	20
21102	6A 3 Pin Socket with	8536	119/-	10
21113	10A Uni D Socket	8536	118/-	10
30373	10A Multi Socket for Cell Phone Pin or 2Pin & 3Pin	8536	129/-	10

## POWER SOCKET WITH SAFETY SHUTTER

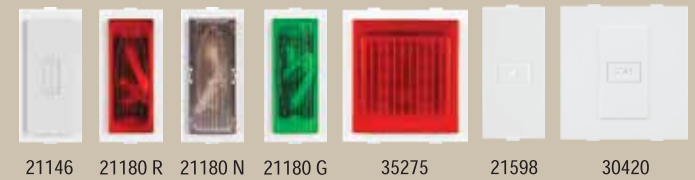
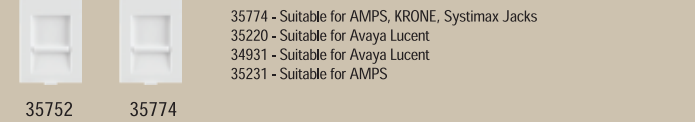
240V~ S.P.

21124	16A 3 Pin Socket (Heavy Duty)  (Tested upto 25A 240V~)	8536	191/-	10
30828	20 & 10A Twin Socket ( Heavy duty )	8536	220/-	10
34374	25 & 10A Twin Socket ( Heavy duty )	8536	213/-	10
22070	13/10/6A Combi Socket For All Pins	8536	216/-	10
21747	13A Flat Pin English Socket	8536	218/-	10

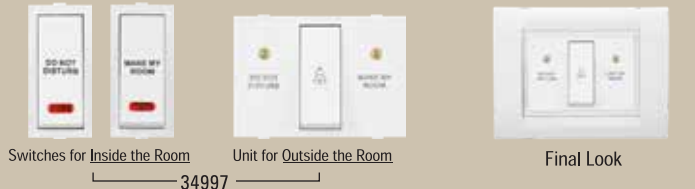
# FAN REGULATORS & DIMMERS



## SUPPORT MODULE



## HOSPITALITY RANGE



## EME FAN REGULATOR & DIMMERS

240V~, 50Hz

22546	Fan Step Regulator Tiny EME 100W	8414	300/-	20
21496	Fan Step Regulator Dura EME 100W	8414	419/-	10
22036	High Speed Fan Regulator 100W	8414	493/-	10
20507	Fan Step Regulator 100W	8414	482/-	10
20799	Dimmer Tiny 450W (For Incandescent Lamp)	8543	309/-	20
21190	Dimmer Dura 650W (For Incandescent Lamp)	8543	419/-	10
30136	Dimmer Dura 1000W (For Incandescent Lamp)	8543	623/-	10
30340	Dimmer For Halogen Dura 650W	8543	446/-	10
30351	Dimmer For Halogen Dura 1000W	8543	602/-	10

## CORD OUTLET, T.V., TEL. OUTLET & CALL BELL SYSTEM

30045	Cord Outlet with Grip	8536	90/-	20
21157	T.V. Socket Outlet Single	8536	107/-	20
20358	Bell Indicator 240V~ 50Hz	8531	207/-	20
21204	Buzzer Dura 240V~ 50Hz	8531	133/-	10
30078	Bulbul Bell Dura 240V~ 50Hz	8531	193/-	10
20471	Audio Video Socket	8536	340/-	10
21996	HDMI Receptor, 1M	8536	764/-	20
20460	USB Charger, 1000mA, 5V, 1M	8536	721/-	20

## TELEPHONE & COMPUTER SOCKETS

20857	RJ 11 Telephone Jack Single with Shutter	8536	107/-	20
20846	RJ11 Telephone Jack Double with Shutter	8536	164/-	20
34942	RJ 11 Telephone Jack Single W/O Shutter	8536	153/-	20
35220	Computer Jack Cat 6 with Shutter	8536	1129/-	20
30555	RJ 45 Computer Jack with Shutter	8536	170/-	20
34931	Only Frame For Cat 5 with Shutter	8536	110/-	20
34920	RJ 45 Jack Avaya Lucent Cat 5	8536	903/-	20
35231	Only Frame For Cat 5 with Shutter	8536	110/-	20
35763	RJ 45 Computer Socket Cat 6	8536	452/-	20
35752	RJ 45 Computer Socket Cat 5e	8536	396/-	20
35774	RJ 45 Receptor	8536	110/-	20

## SUPPORT MODULES

240V~

21146	Fuse Unit for 16/10A	8536	118/-	20
21180 R	Neon Indicator Red	8531	76/-	20
21180 N	Neon Indicator Natural	8531	76/-	20
21180 G	Neon Indicator Green	8531	76/-	20
35275	Electronic Night Lamp Dura LED (High Glow)	9405	202/-	10
21598	Blank Plate Single	8538	24/-	50
30420	Blank Plate Dura	8538	43/-	20

## HOTEL & HOSPITAL RANGE - For Energy Saving

240V~

21770	32A D.P. Main Switch with Key Ring Tag 2 Module	8536	476/-	5
20868	Key Ring Tag only	8536	95/-	10
20482	Key Card Unit with 30 Seconds Delay	8536	1443/-	1

## ROOM SERVICE UNIT FOR HOTELS & MOTELS

240V~

34997	To Operate from Inside the Guest Room 2 Separate Switches marked with DO NOT DISTURB & MAKE MY ROOM  Unit for Outside the Guest Room 3 Module Unit with Bell Push Switch & Indicator ● DO NOT DISTURB & ● MAKE MY ROOM	8531	547/-	5
-------	---------------------------------------------------------------------------------------------------------------------------------------------------------------------------------------------------------------------------------------	------	-------	---

## SHAVER UNITS WITH SAFETY SHUTTERS / MOTION PIR SENSOR

22069	Shaver Socket 110/240V~ with Transformer, 4 Module	8536	1565/-	1
20824	PIR Sensor (Wall Mounting) 2M, 230V~, 50Hz	8536	2545/-	1

## FOOT LIGHT (Night Lamp/ Down light)

240V~

22025	Foot Lamp (Louvres) with 4M box & Tresa Cover	8536	359/-	1
34385	Foot Lamp (Opaque) with 4M box & Tresa Cover	8536	359/-	1
22614	Foot Light LED Based (Cool Day Light), 3 Module 240V~	9405	372/-	1
22615	Foot Light LED Based (Warm Light), 3 Module 240V~	9405	372/-	1

# SWITCHES

Switches with **SPARK SHIELD**



# SOCKETS



\* 16A,20A,25A Switch not suggested for geyser load. Instead MCB/Motor Stater must be used.

CODE	DESCRIPTION	HSN CODE	MRP ₹	PKD
<b>SWITCHES</b>				
21011MB	10AX 1 Way Switch	8536	59/-	20
21022MB	10AX 2 Way Switch	8536	120/-	20
21033MB	10AX 1 Way Switch with Neon	8536	121/-	20
30840MB	10AX 1 Way Switch with Fan Mark	8536	121/-	20
21044MB	10A Bell Push Switch	8536	122/-	20
21055MB	10A Bell Push Switch with Neon	8536	133/-	20
<b>DURA SWITCHES</b>				
21510MB	10AX 1 Way Switch	8536	124/-	10
34964MB	10AX 1 Way Switch with Neon	8536	141/-	10
21521MB	10AX 2 Way Switch	8536	141/-	10
21554MB	10A Bell Push Switch	8536	141/-	10
30715MB	10A Bell Push Switch with Neon	8536	155/-	10
<b>SWITCHES</b>				
21066MB	20A 1 Way Switch	8536	133/-	20
21088MB	20A 2 Way Switch	8536	150/-	20
21077MB	20A 1 Way Switch with Neon	8536	159/-	20
<b>DURA SWITCHES</b>				
21532MB	20A 1 Way Switch	8536	170/-	10
21769MB	20A 1 Way Switch with Neon	8536	188/-	10
21543MB	20A 2 Way Switch	8536	180/-	10
<b>POWER SWITCHES - Heavy Duty</b>				
22014MB	25A S.P. 1 Way Switch with Neon	8536	199/-	20
21984MB	32A D.P. 1 Way Switch with Neon (Heavy duty Double Pole Main Switch)	8536	254/-	10
<b>MOTOR STARTER SWITCH - Overload Protection</b>				
20427MB	20A Motor Starter Switch	8536	454/-	10
20405MB	25A Motor Starter Switch	8536	454/-	10
<b>SOCKET WITH SAFETY SHUTTER</b>				
20530MB	6A 2 Pin Socket Round	8536	94/-	20
21667MB	6A URO 2 Pin Socket	8536	94/-	20
21102MB	6A 3 Pin Socket with	8536	124/-	10
21113MB	10A Uni D Socket	8536	124/-	10
30373MB	10A Multi Socket for Cell Phone Pin or 2Pin & 3Pin	8536	135/-	10
<b>POWER SOCKET WITH SAFETY SHUTTER</b>				
21124MB	16A 3 Pin Socket (Heavy Duty) (Tested upto 25A 240V~)	8536	200/-	10
30828MB	20 & 10A Twin Socket ( Heavy duty )	8536	228/-	10
34374MB	25 & 10A Twin Socket ( Heavy duty )	8536	223/-	10
22070MB	13/10/6A Combi Socket For All Pins	8536	226/-	10
21747MB	13A Flat Pin English Socket	8536	230/-	10

# FAN REGULATORS & DIMMERS



## SUPPORT MODULE



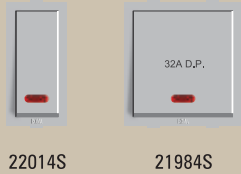
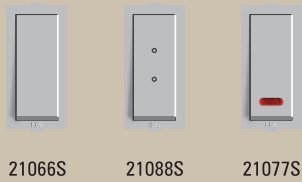
## HOSPITALITY RANGE



CODE	DESCRIPTION	HSN CODE	MRP ₹	PKD
<b>EME FAN REGULATOR &amp; DIMMERS</b>				
22546MB	Fan Step Regulator Tiny EME 100W	8414	318/-	20
21496MB	Fan Step Regulator Dura EME 100W	8414	442/-	10
22036MB	High Speed Fan Regulator 100W	8414	520/-	10
20507MB	Fan Step Regulator 100W	8414	505/-	10
20799MB	Dimmer Tiny 450W (For Incandescent Lamp)	8543	325/-	20
21190MB	Dimmer Dura 650W (For Incandescent Lamp)	8543	440/-	10
30136MB	Dimmer Dura 1000W (For Incandescent Lamp)	8543	654/-	10
30340MB	Dimmer For Halogen Dura 650W	8543	468/-	10
30351MB	Dimmer For Halogen Dura 1000W	8543	632/-	10
<b>CORD OUTLET, T.V., TEL. OUTLET &amp; CALL BELL SYSTEM</b>				
30045MB	Cord Outlet with Grip	8536	95/-	20
21157MB	T.V. Socket Outlet Single	8536	111/-	20
20358MB	Bell Indicator 240V~ 50Hz	8531	218/-	20
21204MB	Buzzer Dura 240V~ 50Hz	8531	139/-	10
30078MB	Bulbul Bell Dura 240V~ 50Hz	8531	207/-	10
20471MB	Audio Video Socket	8536	356/-	10
21996MB	HDMI Receptor, 1M	8536	805/-	20
20460MB	USB Charger, 1000mA, 5V, 1M	8536	815/-	20
<b>TELEPHONE &amp; COMPUTER SOCKETS</b>				
20857MB	RJ 11 Telephone Jack Single with Shutter	8536	111/-	20
20846MB	RJ 11 Telephone Jack Double with Shutter	8536	173/-	20
34942MB	RJ 11 Telephone Jack Double w/o Shutter	8536	161/-	20
35763MB	RJ 45 Computer Socket Cat 6	8536	476/-	20
35752MB	RJ 45 Computer Socket Cat 5e	8536	415/-	20
35774MB	RJ 45 Receptor	8536	114/-	20
<b>SUPPORT MODULES</b>				
21146MB	Fuse Unit for 16/10A	8536	124/-	20
21180RMB	Neon Indicator Red	8531	80/-	20
21180NMB	Neon Indicator Natural	8531	80/-	20
21180GMB	Neon Indicator Green	8531	80/-	20
35275MB	Electronic Night Lamp Dura LED (High Glow)	9405	211/-	10
21598MB	Blank Plate Single	8538	25/-	50
30420MB	Blank Plate Dura	8538	44/-	20
<b>HOTEL &amp; HOSPITAL RANGE - For Energy Saving</b>				
21770MB	32A D.P. Main Switch with Key Ring Tag 2 Module	8536	495/-	5
20868MB	Key Ring Tag only	8536	98/-	10
20482MB	Key Card Unit with 30 Seconds Delay	8536	1514/-	1
<b>ROOM SERVICE UNIT FOR HOTELS &amp; MOTELS</b>				
34997MB	To Operate from Inside the Guest Room 2 Separate Switches marked with DO NOT DISTURB & MAKE MY ROOM	8536	567/-	5
	Unit for Outside the Guest Room 3 Module Unit with Bell Push Switch & Indicator ● DO NOT DISTURB & ● MAKE MY ROOM			
<b>SHAVER UNITS WITH SAFETY SHUTTERS</b>				
22069MB	Shaver Socket 110/240V~ with Transformer 4 Module	8536	1642/-	1
20824MB	PIR Sensor (Wall Mounting) 2M, 230V~, 50Hz	8536	2715/-	1
<b>FOOT LIGHT (Night Lamp/ Down light)</b>				
22025MB	Foot Lamp (Louvres) with 4M box & Tresa Cover	8536	378/-	1
34385MB	Foot Lamp (Opaque) with 4M box & Tresa Cover	8536	378/-	1
22614MB	Foot Light LED Based (Cool Day Light), 3 Module 240V~	9405	391/-	1
22615MB	Foot Light LED Based (Warm Light), 3 Module 240V~	9405	391/-	1

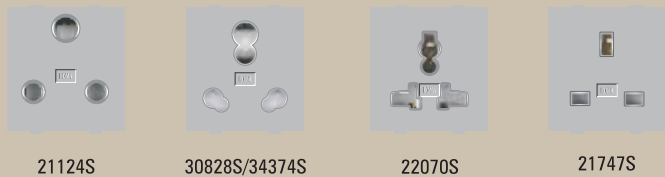
## SWITCHES

Switches with **SPARK SHIELD**



Ideal & safe for Air Conditioners, Coolers, Water Pumps, Refrigerators, Mixers and All types of appliances.

## SOCKETS



\* 16A,20A,25A Switch not suggested for geyser load. Instead MCB/Motor Stater must be used.

CODE	DESCRIPTION	HSN CODE	MRP ₹	PKD
<b>SWITCHES</b>				
240V~ S.P.				
21011S	10AX 1 Way Switch	8536	59/-	20
21022S	10AX 2 Way Switch	8536	120/-	20
21033S	10AX 1 Way Switch with Neon	8536	121/-	20
30840S	10AX 1 Way Switch with Fan Mark	8536	121/-	20
21044S	10A Bell Push Switch	8536	122/-	20
21055S	10A Bell Push Switch with Neon	8536	133/-	20

<b>DURA SWITCHES</b>				
240V~ S.P.				
21510S	10AX 1 Way Switch	8536	124/-	10
34964S	10AX 1 Way Switch with Neon	8536	141/-	10
21521S	10AX 2 Way Switch	8536	141/-	10
21554S	10A Bell Push Switch	8536	141/-	10
30715S	10A Bell Push Switch with Neon	8536	155/-	10

<b>SWITCHES</b>				
240V~ S.P.				
21066S	20A 1 Way Switch	8536	133/-	20
21088S	20A 2 Way Switch	8536	150/-	20
21077S	20A 1 Way Switch with Neon	8536	159/-	20

<b>DURA SWITCHES</b>				
240V~ S.P.				
21532S	20A 1 Way Switch	8536	170/-	10
21769S	20A 1 Way Switch with Neon	8536	188/-	10
21543S	20A 2 Way Switch	8536	180/-	10

<b>POWER SWITCHES - Heavy Duty</b>				
240V~ S.P. & D.P.				
22014S	25A S.P. 1 Way Switch with Neon	8536	199/-	20
21984S	32A D.P. 1 Way Switch with Neon (Heavy duty Double Pole Main Switch)	8536	254/-	10

<b>MOTOR STARTER SWITCH - Overload Protection</b>				
240V~ S.P.				
20427S	20A Motor Starter Switch	8536	454/-	10
20405S	25A Motor Starter Switch	8536	454/-	10

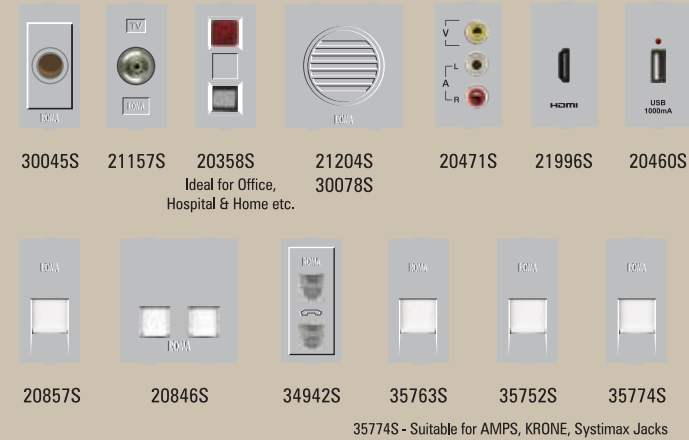
<b>SOCKET WITH SAFETY SHUTTER</b>				
240V~ S.P.				
20530S	6A 2 Pin Socket Round	8536	94/-	20
21667S	6A URO 2 Pin Socket	8536	94/-	20
21102S	6A 3 Pin Socket with	8536	124/-	10
21113S	10A Uni D Socket	8536	124/-	10
30373S	10A Multi Socket for Cell Phone Pin or 2Pin & 3Pin	8536	135/-	10

<b>POWER SOCKET WITH SAFETY SHUTTER</b>				
240V~ S.P.				
21124S	16A 3 Pin Socket (Heavy Duty) (Tested upto 25A 240V~)	8536	200/-	10
30828S	20 & 10A Twin Socket ( Heavy duty )	8536	228/-	10
34374S	25 & 10A Twin Socket ( Heavy duty )	8536	223/-	10
22070S	13/10/6A Combi Socket For All Pins	8536	226/-	10
21747S	13A Flat Pin English Socket	8536	230/-	10

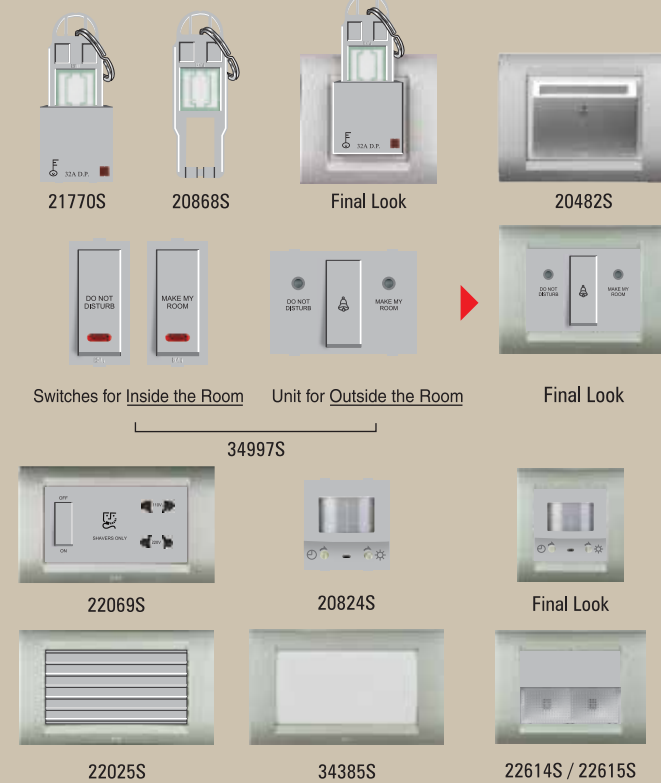
## FAN REGULATORS & DIMMERS



## SUPPORT MODULE



## HOSPITALITY RANGE



CODE	DESCRIPTION	HSN CODE	MRP ₹	PKD
<b>EME FAN REGULATOR &amp; DIMMERS</b>				
240V~, 50Hz				
22546S	Fan Step Regulator Tiny EME 100W	8414	318/-	20
21496S	Fan Step Regulator Dura EME 100W	8414	442/-	10
22036S	High Speed Fan Regulator 100W	8414	520/-	10
20507S	Fan Step Regulator 100W	8414	505/-	10
20799S	Dimmer Tiny 450W (For Incandescent Lamp)	8543	325/-	20
21190S	Dimmer Dura 650W (For Incandescent Lamp)	8543	440/-	10
30136S	Dimmer Dura 1000W (For Incandescent Lamp)	8543	654/-	10
30340S	Dimmer For Halogen Dura 650W	8543	468/-	10
30351S	Dimmer For Halogen Dura 1000W	8543	632/-	10

<b>CORD OUTLET, T.V., TEL. OUTLET &amp; CALL BELL SYSTEM</b>				
30045S	Cord Outlet with Grip	8536	95/-	20
21157S	T.V. Socket Outlet Single	8536	111/-	20
20358S	Bell Indicator 240V~ 50Hz	8531	218/-	20
21204S	Buzzer Dura 240V~ 50Hz	8531	139/-	10
30078S	Bulbul Bell Dura 240V~ 50Hz	8531	207/-	10
20471S	Audio Video Socket	8536	356/-	10
21996S	HDMI Receptor, 1M	8536	805/-	20
20460S	USB Charger, 1000mA, 5V, 1M	8536	815/-	20

<b>TELEPHONE &amp; COMPUTER SOCKETS</b>				
20857S	RJ 11 Telephone Jack Single with Shutter	8536	111/-	20
20846S	RJ 11 Telephone Jack Double with Shutter	8536	173/-	20
34942S	RJ 11 Telephone Jack Double w/o Shutter	8536	161/-	20
35763S	RJ 45 Computer Socket Cat 6	8536	476/-	20
35752S	RJ 45 Computer Socket Cat 5e	8536	415/-	20
35774S	RJ 45 Receptor	8536	114/-	20

<b>SUPPORT MODULES</b>				
240V~				
21146S	Fuse Unit for 16/10A	8536	124/-	20
21180RS	Neon Indicator Red	8531	80/-	20
21180NS	Neon Indicator Natural	8531	80/-	20
21180GS	Neon Indicator Green	8531	80/-	20
35275S	Electronic Night Lamp Dura LED (High Glow)	9405	211/-	10
21598S	Blank Plate Single	8538	25/-	50
30420S	Blank Plate Dura	8538	44/-	20

<b>HOTEL &amp; HOSPITAL RANGE - For Energy Saving</b>				
240V~				
21770S	32A D.P. Main Switch with Key Ring Tag 2 Module	8536	495/-	5
20868S	Key Ring Tag only	8536	98/-	10
20482S	Key Card Unit with 30 Seconds Delay	8536	1514/-	1

<b>ROOM SERVICE UNIT FOR HOTELS &amp; MOTELS</b>				
240V~				
34997S	To Operate from Inside the Guest Room 2 Separate Switches marked with DO NOT DISTURB & MAKE MY ROOM Unit for Outside the Guest Room 3 Module Unit with Bell Push Switch & Indicator ● DO NOT DISTURB & ● MAKE MY ROOM	8536	567/-	5

<b>SHAVER UNITS WITH SAFETY SHUTTERS</b>				
22069S	Shaver Socket 110/240V~ with Transformer 4 Module	8536	1642/-	1
20824S	PIR Sensor (Wall Mounting) 2M, 230V~, 50Hz	8536	2715/-	1

<b>FOOT LIGHT (Night Lamp/ Down light)</b>				
240V~				
22025S	Foot Lamp (Louvres) with 4M box & Tresa Cover	8536	378/-	1
34385S	Foot Lamp (Opaque) with 4M box & Tresa Cover	8536	378/-	1
22614S	Foot Light LED Based (Cool Day Light), 3 Module 240V~	9405	391/-	1
22615S	Foot Light LED Based (Warm Light), 3 Module 240V~	9405	391/-	1

Feels like a Diamond,  
Crafted to Perfection!

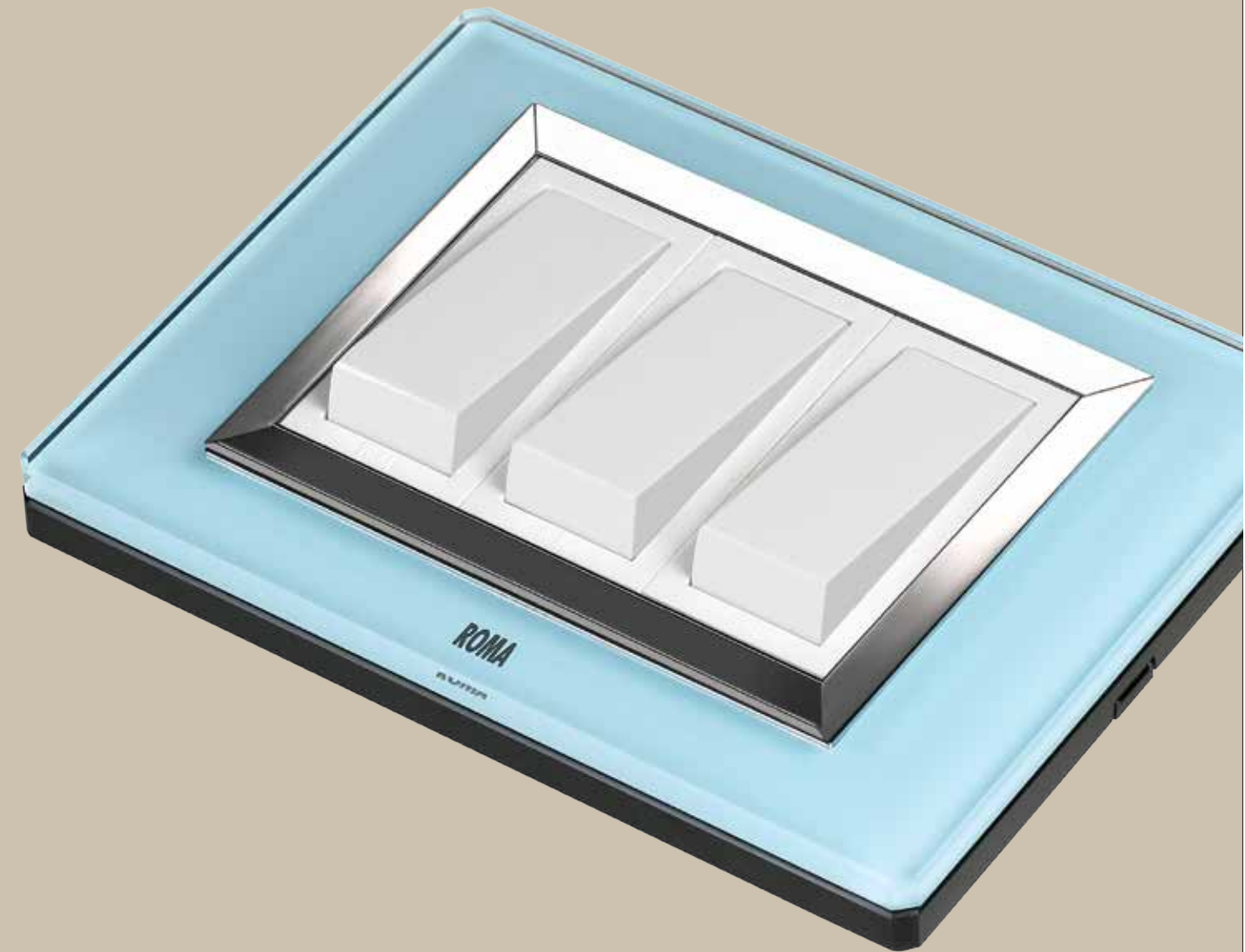
**ROMA**  
VETRO



- Precision Diamond Cut for Stylish Design
- High Density Toughened Glass 3 Times More Stronger than Non - Tempered Glass
- UPP Technology ensures Rich Colour effect



# ROMA VETRO



Pure White



Space Black



Aqua Blue



Coconut Brown



Regal Mahogany

MODULE	1 MODULE	2 MODULE	3 MODULE	4 MODULE	6 MODULE	8 MODULE HORIZONTAL	8 MODULE VERTICAL	12 MODULE	18 MODULE
PURE WHITE	30216 GPW	30227 GPW	30238 GPW	30249 GPW	30250 GPW	30384 GPW	30260 GPW	30271 GPW	30282 GPW
SPACE BLACK	30216 GSB	30227 GSB	30238 GSB	30249 GSB	30250 GSB	30384 GSB	30260 GSB	30271 GSB	30282 GSB
AQUA BLUE	30216 GAB	30227 GAB	30238 GAB	30249 GAB	30250 GAB	30384 GAB	30260 GAB	30271 GAB	30282 GAB
COCONUT BROWN	30216 GCB	30227 GCB	30238 GCB	30249 GCB	30250 GCB	30384 GCB	30260 GCB	30271 GCB	30282 GCB
REGAL MAHOGANY	30216 GRM	30227 GRM	30238 GRM	30249 GRM	30250 GRM	30384 GRM	30260 GRM	30271 GRM	30282 GRM
HSN CODE	8538	8538	8538	8538	8538	8538	8538	8538	8538
MRP ₹ Per Unit	447/-	447/-	611/-	809/-	1097/-	1254/-	1254/-	1560/-	2577/-
PKG.	5	5	5	5	5	5	5	5	5

\* Do not use " Hard Cleaning Agent" for cleaning purpose.



# PLATES



## TRESA PLATES



SOLID WHITE



SOLID BLACK



SOLID SILVER



TRESA SOLID - PLATES (with Base Frame)

All Tresa plates with base frames

MODULE	1 MODULE	2 MODULE	3 MODULE	4 MODULE	6 MODULE	8 MODULE HORIZONTAL	8 MODULE VERTICAL	12 MODULE	16 MODULE	18 MODULE
WHITE	30216WH	30227WH	30238WH	30249WH	30250WH	30384WH	30260WH	30271WH	34680WH	30282WH
MRP ₹ Per Unit	75	75	96	111	155	199	199	246	275	288
MATT BLACK	30216MB	30227MB	30238MB	30249MB	30250MB	30384MB	30260MB	30271MB	34680MB	30282MB
MRP ₹ Per Unit	79	79	102	118	162	209	209	257	290	300
SILVER	30216SL	30227SL	30238SL	30249SL	30250SL	30384SL	30260SL	30271SL	34680SL	30282SL
HSN CODE	8538	8538	8538	8538	8538	8538	8538	8538	8538	8538
MRP ₹ Per Unit	79	79	102	118	162	209	209	257	290	300
PKG.	20	20	20	20	10	10	6	6	6	6

GLOSSY CREAM



GLOSSY BLACK



AZUL GREY



MODULE	1 MODULE	2 MODULE	3 MODULE	4 MODULE	6 MODULE	8 MODULE HORIZONTAL	8 MODULE VERTICAL	12 MODULE	16 MODULE	18 MODULE
CREAM - CR	30216CR	30227CR	30238CR	30249CR	30250CR	30384CR	30260CR	30271CR	34680CR	30282CR
MRP ₹ Per Unit	79	79	102	119	166	214	214	269	303	315
BLACK - BL	30216BL	30227BL	30238BL	30249BL	30250BL	30384BL	30260BL	30271BL	34680BL	30282BL
MRP ₹ Per Unit	79	79	102	119	166	214	214	269	303	315
AZUL GREY - AG	30216AG	30227AG	30238AG	30249AG	30250AG	30384AG	30260AG	30271AG	34680AG	30282AG
MRP ₹ Per Unit	79	79	102	119	166	214	214	269	303	315
PKG.	20	20	20	20	10	10	6	6	6	6

OAK WOOD



MARBLE



TRESA TEXTURE - Texture Colour Plates (with White Base Frame)

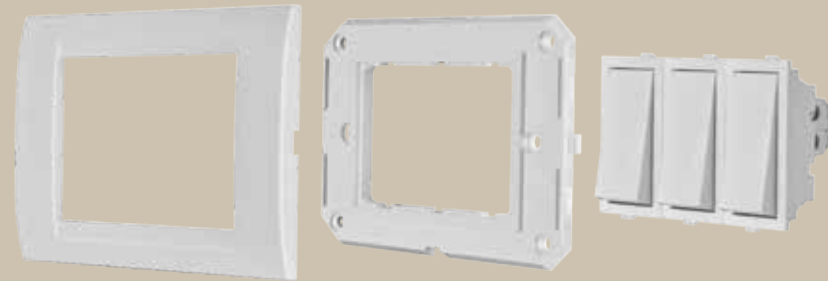
MODULE	1 MODULE	2 MODULE	3 MODULE	4 MODULE	6 MODULE	8 MODULE HORIZONTAL	8 MODULE VERTICAL	12 MODULE	16 MODULE	18 MODULE
OAK WOOD - OW	35107OW	35118OW	35129OW	35130OW	35140OW	35162OW	35151OW	35173OW	35210OW	35184OW
MRP ₹ Per Unit	158	158	201	236	334	451	451	552	584	621
MARBLE - ML	35107ML	35118ML	35129ML	35130ML	35140ML	35162ML	35151ML	35173ML	35210ML	35184ML
MRP ₹ Per Unit	158	158	201	236	334	451	451	552	584	621
PKG.	20	20	20	20	10	10	6	6	6	6

## SOLID

(ONE SIMPLE COLOUR)



Final Look



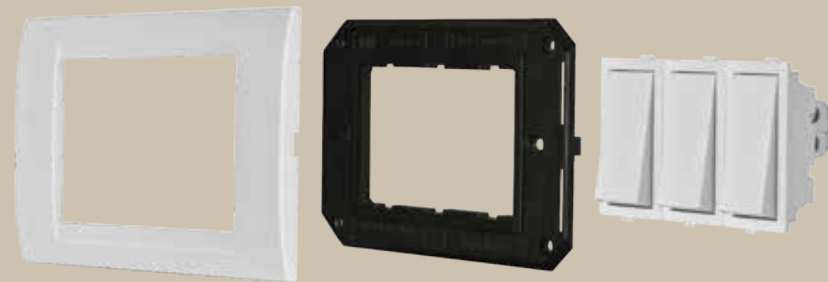
Combination of 3 Unit

## ESSENTIAL

(COLLAR VIVID COLOUR)



Final Look



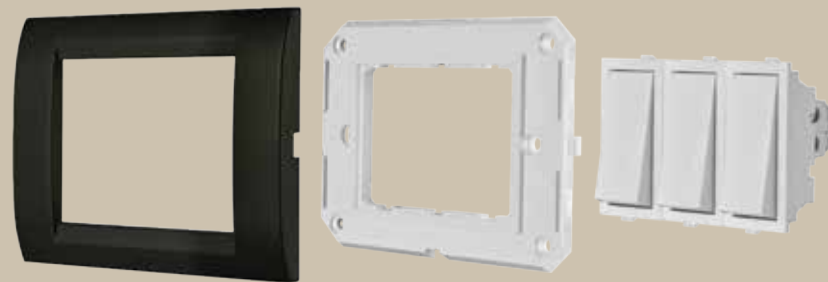
Combination of 3 Unit

## PREMIUM

(COVER VIVID PLATE)



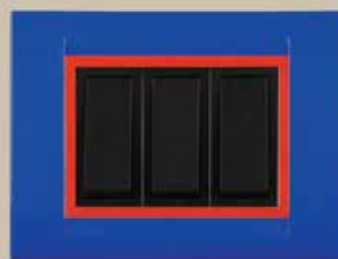
Final Look



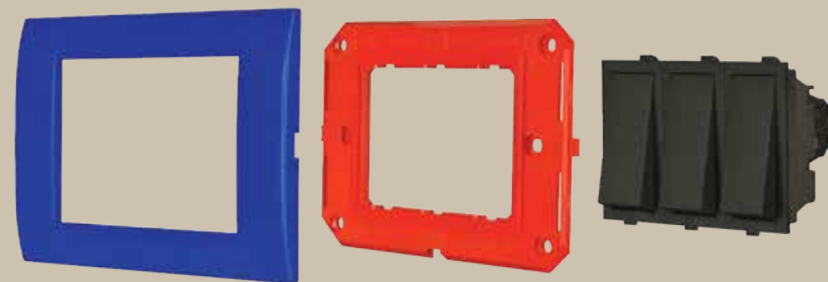
Combination of 3 Unit

## LUXURY

(THE MAGIC OF COLOURS)



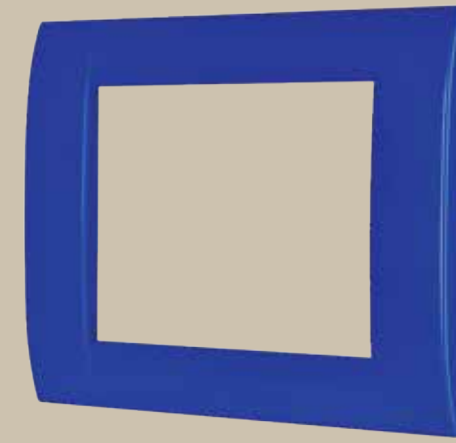
Final Look



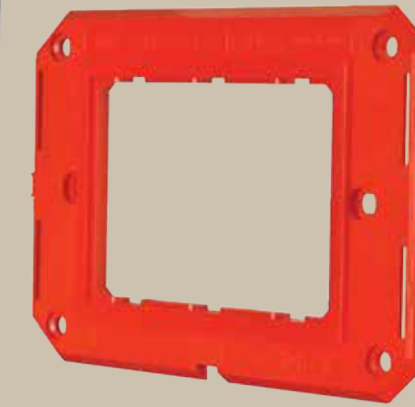
Combination of 3 Unit

# Massive | 168

ROMA® | Concept



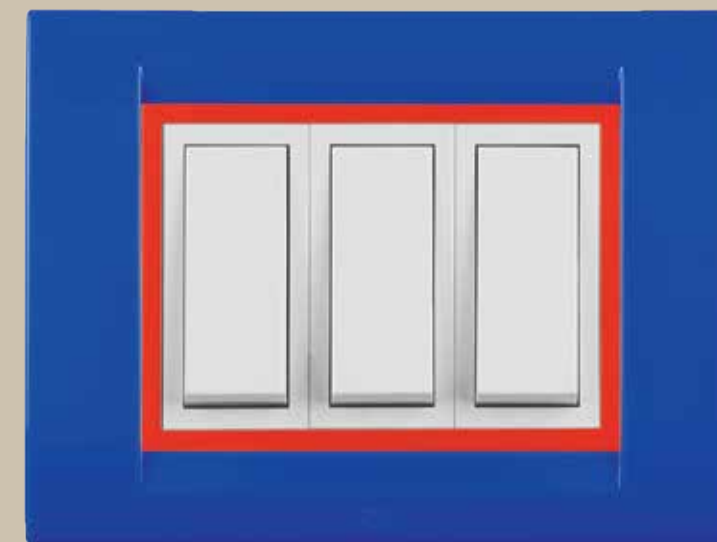
Cover Plate



Inner Frame

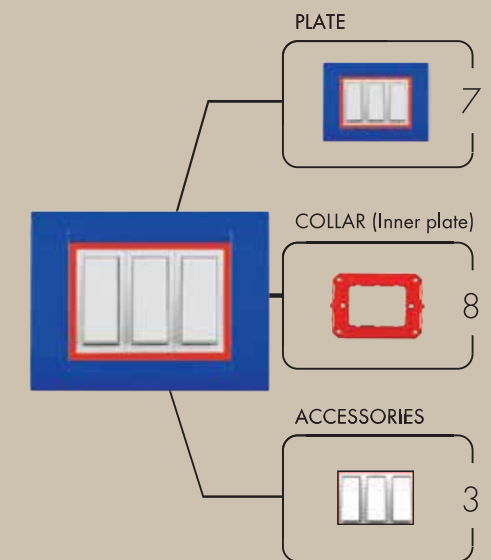


Accessories



Colours Start Playing

3 Parts Combination enables...



# New Tresa Cover Plates



WHITE										
MODULE	1 MODULE	2 MODULE	3 MODULE	4 MODULE	6 MODULE	8 MODULE HORIZONTAL	8 MODULE VERTICAL	12 MODULE	16 MODULE	18 MODULE
CODE	30216CWH	30227CWH	30238CWH	30249CWH	30250CWH	30384CWH	30260CWH	30271CWH	34680CWH	30282CWH
HSN CODE	8538	8538	8538	8538	8538	8538	8538	8538	8538	8538
MRP ₹ Per Unit	29/-	29/-	37/-	44/-	61/-	77/-	77/-	95/-	105/-	110/-
PKG.	10	10	10	10	10	10	6	6	6	6



BLACK										
MODULE	1 MODULE	2 MODULE	3 MODULE	4 MODULE	6 MODULE	8 MODULE HORIZONTAL	8 MODULE VERTICAL	12 MODULE	16 MODULE	18 MODULE
CODE	30216CMB	30227CMB	30238CMB	30249CMB	30250CMB	30384CMB	30260CMB	30271CMB	34680CMB	30282CMB
HSN CODE	8538	8538	8538	8538	8538	8538	8538	8538	8538	8538
MRP ₹ Per Unit	32/-	32/-	43/-	50/-	68/-	87/-	87/-	106/-	120/-	126/-
PKG.	10	10	10	10	10	10	6	6	6	6



SILVER										
MODULE	1 MODULE	2 MODULE	3 MODULE	4 MODULE	6 MODULE	8 MODULE HORIZONTAL	8 MODULE VERTICAL	12 MODULE	16 MODULE	18 MODULE
CODE	30216CSL	30227CSL	30238CSL	30249CSL	30250CSL	30384CSL	30260CSL	30271CSL	34680CSL	30282CSL
HSN CODE	8538	8538	8538	8538	8538	8538	8538	8538	8538	8538
MRP ₹ Per Unit	32/-	32/-	43/-	50/-	68/-	87/-	87/-	106/-	120/-	126/-
PKG.	10	10	10	10	10	10	6	6	6	6



CHAMPAGNE										
MODULE	1 MODULE	2 MODULE	3 MODULE	4 MODULE	6 MODULE	8 MODULE HORIZONTAL	8 MODULE VERTICAL	12 MODULE	16 MODULE	18 MODULE
CODE	30216CCH	30227CCH	30238CCH	30249CCH	30250CCH	30384CCH	30260CCH	30271CCH	34680CCH	30282CCH
HSN CODE	8538	8538	8538	8538	8538	8538	8538	8538	8538	8538
MRP ₹ Per Unit	44/-	44/-	57/-	66/-	90/-	116/-	116/-	143/-	161/-	168/-
PKG.	10	10	10	10	10	10	6	6	6	6



PEARL										
MODULE	1 MODULE	2 MODULE	3 MODULE	4 MODULE	6 MODULE	8 MODULE HORIZONTAL	8 MODULE VERTICAL	12 MODULE	16 MODULE	18 MODULE
CODE	30216CPL	30227CPL	30238CPL	30249CPL	30250CPL	30384CPL	30260CPL	30271CPL	34680CPL	30282CPL
HSN CODE	8538	8538	8538	8538	8538	8538	8538	8538	8538	8538
MRP ₹ Per Unit	44/-	44/-	57/-	66/-	90/-	116/-	116/-	143/-	161/-	168/-
PKG.	10	10	10	10	10	10	6	6	6	6



BLUE										
MODULE	1 MODULE	2 MODULE	3 MODULE	4 MODULE	6 MODULE	8 MODULE HORIZONTAL	8 MODULE VERTICAL	12 MODULE	16 MODULE	18 MODULE
CODE	30216CBL	30227CBL	30238CBL	30249CBL	30250CBL	30384CBL	30260CBL	30271CBL	34680CBL	30282CBL
HSN CODE	8538	8538	8538	8538	8538	8538	8538	8538	8538	8538
MRP ₹ Per Unit	51/-	51/-	64/-	73/-	102/-	131/-	131/-	161/-	180/-	187/-
PKG.	10	10	10	10	10	10	6	6	6	6

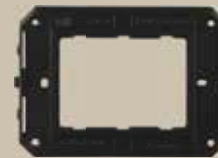


COFFEE OAK										
MODULE	1 MODULE	2 MODULE	3 MODULE	4 MODULE	6 MODULE	8 MODULE HORIZONTAL	8 MODULE VERTICAL	12 MODULE	16 MODULE	18 MODULE
CODE	30216CCO	30227CCO	30238CCO	30249CCO	30250CCO	30384CCO	30260CCO	30271CCO	34680CCO	30282CCO
HSN CODE	8538	8538	8538	8538	8538	8538	8538	8538	8538	8538
MRP ₹ Per Unit	120/-	120/-	155/-	181/-	250/-	322/-	322/-	394/-	445/-	461/-
PKG.	10	10	10	10	10	10	6	6	6	6

# New Tresa Base Frames



WHITE										
MODULE	1 MODULE	2 MODULE	3 MODULE	4 MODULE	6 MODULE	8 MODULE HORIZONTAL	8 MODULE VERTICAL	12 MODULE	16 MODULE	18 MODULE
CODE	30216MWH	30227MWH	30238MWH	30249MWH	30250MWH	30384MWH	30260MWH	30271MWH	34680MWH	30282MWH
HSN CODE	8538	8538	8538	8538	8538	8538	8538	8538	8538	8538
MRP ₹ Per Unit	47/-	47/-	61/-	69/-	96/-	125/-	125/-	153/-	171/-	178/-
PKG.	10	10	10	10	10	10	6	6	6	6



BLACK										
MODULE	1 MODULE	2 MODULE	3 MODULE	4 MODULE	6 MODULE	8 MODULE HORIZONTAL	8 MODULE VERTICAL	12 MODULE	16 MODULE	18 MODULE
CODE	30216MIB	30227MIB	30238MIB	30249MIB	30250MIB	30384MIB	30260MIB	30271MIB	34680MIB	30282MIB
HSN CODE	8538	8538	8538	8538	8538	8538	8538	8538	8538	8538
MRP ₹ Per Unit	50/-	50/-	64/-	73/-	102/-	131/-	131/-	159/-	180/-	187/-
PKG.	10	10	10	10	10	10	6	6	6	6



SILVER										
MODULE	1 MODULE	2 MODULE	3 MODULE	4 MODULE	6 MODULE	8 MODULE HORIZONTAL	8 MODULE VERTICAL	12 MODULE	16 MODULE	18 MODULE
CODE	30216MISL	30227MISL	30238MISL	30249MISL	30250MISL	30384MISL	30260MISL	30271MISL	34680MISL	30282MISL
HSN CODE	8538	8538	8538	8538	8538	8538	8538	8538	8538	8538
MRP ₹ Per Unit	50/-	50/-	64/-	73/-	102/-	131/-	131/-	159/-	180/-	187/-
PKG.	10	10	10	10	10	10	6	6	6	6



PEARL										
MODULE	1 MODULE	2 MODULE	3 MODULE	4 MODULE	6 MODULE	8 MODULE HORIZONTAL	8 MODULE VERTICAL	12 MODULE	16 MODULE	18 MODULE
CODE	30216MIPL	30227MIPL	30238MIPL	30249MIPL	30250MIPL	30384MIPL	30260MIPL	30271MIPL	34680MIPL	30282MIPL
HSN CODE	8538	8538	8538	8538	8538	8538	8538	8538	8538	8538
MRP ₹ Per Unit	61/-	61/-	79/-	90/-	126/-	162/-	162/-	198/-	225/-	232/-
PKG.	10	10	10	10	10	10	6	6	6	6



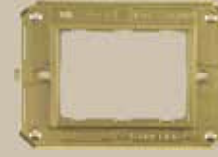
CHAMPAGNE										
MODULE	1 MODULE	2 MODULE	3 MODULE	4 MODULE	6 MODULE	8 MODULE HORIZONTAL	8 MODULE VERTICAL	12 MODULE	16 MODULE	18 MODULE
CODE	30216MICH	30227MICH	30238MICH	30249MICH	30250MICH	30384MICH	30260MICH	30271MICH	34680MICH	30282MICH
HSN CODE	8538	8538	8538	8538	8538	8538	8538	8538	8538	8538
MRP ₹ Per Unit	61/-	61/-	79/-	90/-	126/-	162/-	162/-	198/-	225/-	232/-
PKG.	10	10	10	10	10	10	6	6	6	6



RED										
MODULE	1 MODULE	2 MODULE	3 MODULE	4 MODULE	6 MODULE	8 MODULE HORIZONTAL	8 MODULE VERTICAL	12 MODULE	16 MODULE	18 MODULE
CODE	30216MIRD	30227MIRD	30238MIRD	30249MIRD	30250MIRD	30384MIRD	30260MIRD	30271MIRD	34680MIRD	30282MIRD
HSN CODE	8538	8538	8538	8538	8538	8538	8538	8538	8538	8538
MRP ₹ Per Unit	61/-	61/-	79/-	90/-	126/-	162/-	162/-	198/-	225/-	232/-
PKG.	10	10	10	10	10	10	6	6	6	6



CHROME										
MODULE	1 MODULE	2 MODULE	3 MODULE	4 MODULE	6 MODULE	8 MODULE HORIZONTAL	8 MODULE VERTICAL	12 MODULE	16 MODULE	18 MODULE
CODE	30216MICR	30227MICR	30238MICR	30249MICR	30250MICR	30384MICR	30260MICR	30271MICR	34680MICR	30282MICR
HSN CODE	8538	8538	8538	8538	8538	8538	8538	8538	8538	8538
MRP ₹ Per Unit	66/-	66/-	83/-	96/-	132/-	173/-	173/-	210/-	237/-	247/-
PKG.	10	10	10	10	10	10	6	6	6	6



GOLD										
MODULE	1 MODULE	2 MODULE	3 MODULE	4 MODULE	6 MODULE	8 MODULE HORIZONTAL	8 MODULE VERTICAL	12 MODULE	16 MODULE	18 MODULE
CODE	30216MIGL	30227MIGL	30238MIGL	30249MIGL	30250MIGL	30384MIGL	30260MIGL	30271MIGL	34680MIGL	30282MIGL
HSN CODE	8538	8538	8538	8538	8538	8538	8538	8538	8538	8538
MRP ₹ Per Unit	66/-	66/-	83/-	96/-	132/-	173/-	173/-	210/-	237/-	247/-
PKG.	10	10	10	10	10	10	6	6	6	6

\* Do not use " Hard Cleaning Agent" for cleaning purpose.

## DEKO PLATES

Single Mounting Plates



MODULE	1 MODULE	2 MODULE	3 MODULE	4 MODULE	6 MODULE	8 MODULE HORIZONTAL	8 MODULE VERTICAL	12 MODULE	16 MODULE	18 MODULE
WHITE	21317WH	21328WH	21372WH	21339WH	21340WH	30431WH	21350WH	21361WH	20325WH	21383WH
HSN CODE	8538	8538	8538	8538	8538	8538	8538	8538	8538	8538
MRP ₹ Per.Unit	55/-	55/-	64/-	73/-	114/-	138/-	138/-	179/-	194/-	217/-
PKG	20	20	20	20	10	10	6	6	6	6

## LIRA PLATES

With White Frame



MODULE	1 MODULE	2 MODULE	3 MODULE	4 MODULE	6 MODULE	8 MODULE HORIZONTAL	8 MODULE VERTICAL	9 MODULE HORIZONTAL	12 MODULE	16 MODULE	18 MODULE
ULTRA SLIM	35286WH	35297WH	35300WH	35311WH	35322WH	35344WH	35333WH	35388WH	35355WH	35366WH	35377WH
HSN CODE	8538	8538	8538	8538	8538	8538	8538	8538	8538	8538	8538
MRP ₹ Per.Unit	73/-	73/-	86/-	107/-	153/-	185/-	185/-	218/-	245/-	277/-	304/-
PKG.	20	20	20	20	10	10	6	10	6	6	6

## SOLID METAL PLATES

VICTORIAN SS - Stainless Steel Brush finished  
Solid Metal Plate (with White Frame)



MODULE	1 MODULE	2 MODULE	3 MODULE	4 MODULE	6 MODULE	8 MODULE HORIZONTAL	8 MODULE VERTICAL	9 MODULE HORIZONTAL	12 MODULE	16 MODULE	18 MODULE
VICTORIAN SS	30726SS	30737SS	30748SS	30759SS	30760SS	30781SS					
HSN CODE	8538	8538	8538	8538	8538	8538					
MRP ₹ Per.Unit	253/-	253/-	339/-	363/-	495/-	545/-					
PKG.	5	5	5	5	5	5					

## CLASSIC GOLD PLATES

24KT Gold Plated casted rope border solid Metal Plate  
(with White Frame)



MODULE	1 MODULE	2 MODULE	3 MODULE	4 MODULE	6 MODULE	8 MODULE HORIZONTAL	8 MODULE VERTICAL	9 MODULE HORIZONTAL	12 MODULE	16 MODULE	18 MODULE
CLASSIC GOLD	21871GD	21882GD	21893GD	21907GD	21918GD		21929GD		21930GD		
HSN CODE	8538	8538	8538	8538	8538		8538		8538		
MRP ₹ Per.Unit	425/-	425/-	497/-	580/-	764/-		871/-		1272/-		
PKG.	5	5	5	5	5		5		5		

For Those Who Have  
Passion for Gold...



\* Do not use " Hard Cleaning Agent" for cleaning purpose.

# MCBs

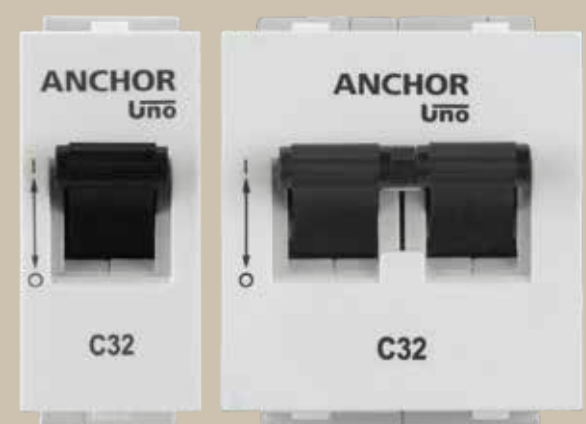


## WANT TO SAFEGUARD YOUR VALUABLE APPLIANCES?

Protect them with Uno Mini MCBs  
**Per Point Protection.**



Everyday appliances tend to pull more electricity. With a High Breaking Capacity of 3000A and Per Point Protection, Uno mini MCBs ensure your appliances are safe, always.



Protects against Overloads & Short Circuits  
Short Circuit Breaking Capacity 3kA  
Per Point Protection for Individual Appliances  
Low Watt-loss and Energy Saving  
Aesthetically Fitted on the modular Boards  
Finger Touch Proof (IP20)

**Suitable with ROMA Plates**

IS / IEC 60898-1  
**3kA**  
CM / L-8653085

ISO  
9001:2000  
CERTIFIED COMPANY

**Uno**  
COMPLETE PROTECTION RANGE

## UNO Mini Modular MCB SP

**3kA**



CODE	DESCRIPTION	HSN CODE	MRP	OUTER CARTON	MASTER CARTON
<b>SP MINI MODULAR SP MCB 'C' TYPE</b>					
98069	6A SP 'C' MCB	8536	173/-	12	120
98070	10A SP 'C' MCB	8536	173/-	12	120
98071	16A SP 'C' MCB	8536	173/-	12	120
98072	20A SP 'C' MCB	8536	179/-	12	120
98073	25A SP 'C' MCB	8536	179/-	12	120
98074	32A SP 'C' MCB	8536	185/-	12	120

## UNO Mini Modular MCB DP

**3kA**



CODE	DESCRIPTION	HSN CODE	MRP	OUTER CARTON	MASTER CARTON
<b>DP MINI MODULAR SP MCB 'C' TYPE</b>					
98075	6A DP 'C' MCB	8536	336/-	6	60
98076	10A DP 'C' MCB	8536	336/-	6	60
98077	16A DP 'C' MCB	8536	336/-	6	60
98078	20A DP 'C' MCB	8536	336/-	6	60
98079	25A DP 'C' MCB	8536	336/-	6	60
98080	32A DP 'C' MCB	8536	336/-	6	60

## POWER UNIT Modular Box With Mini Modular MCB



### FEATURES :

- ISI Marked Mini MCB with short circuit breaking capacity of 3000A
- Overload & Short Circuit Protection
- Suitable for Per Point Protection of Home Appliances
- Easy to Operate & Replace
- Compact & Aesthetic Design
- 16A ISI Plug Top (Tested upto 20A)

<b>MODULAR AC BOX WITH MINI MCB</b>					
CODE	DESCRIPTION	PHASE	HSN CODE	MRP	PKD.
98488	Power Unit with 20A SP MCB with ISI plug top (With Box)	Single Phase	8536	654/-	30
98489	Power Unit with 20A SP MCB with ISI plug top (Without Box)	Single Phase	8536	560/-	30
98401	UNO 4 Way Metal Enclosure Box with SP Mini MCB	Single Phase	8536	701/-	20
98492	UNO 4 Way Metal Enclosure Box with DP Mini MCB	Single Phase	8536	856/-	20



## Concealed Galvanised Metal Boxes



### Metal Boxes

- Rust Protected 120 GSM GI BOXES
- Very long service life
- Good quality threads
- Tested as per IS
- Earthing terminal to avoid shock

Code	Module	Size(mm)	Depth(mm)	HSN Code	MRP ₹/ Unit	Pkd
<b>CONCEALED GI SHEET METAL BOXES (20 Gauge)</b>						
Concealed Galvanised mounting boxes (Rust Protected)						
21780	1 or 2 Module	79 x 75	46	8538	45/-	10
21452	3 Module	79 x 99	46	8538	61/-	10
21791	4 Module	79 x 135	52	8538	75/-	10
21463	6 Module	79 x 207	52	8538	101/-	10
30453	8 or 9 Module Horizontal	79 x 230	52	8538	131/-	5
21474	8 Module Rectangular	132 x 135	56	8538	131/-	5
21485	12 Module	132 x 207	56	8538	161/-	5
21736	16 Module	142 x 230	56	8538	173/-	5
21758	18 Module	207 x 207	60	8538	190/-	5

Code	Module	Size(mm)	Depth(mm)	HSN Code	MRP ₹/ Unit	Pkd
<b>CONCEALED GI SHEET METAL BOXES (18 Gauge)</b>						
Concealed Galvanised mounting boxes (Rust Protected)						
35640	1 or 2 Module	79 x 75	46	8538	55/-	10
35650	3 Module	79 x 99	46	8538	77/-	10
35661	4 Module	79 x 135	52	8538	94/-	10
35672	6 Module	79 x 207	52	8538	125/-	10
35683	8 or 9 Module Horizontal	79 x 230	52	8538	163/-	5
35394	8 Module Rectangular	132 x 135	56	8538	163/-	5
35708	12 Module	132 x 207	56	8538	201/-	5
35719	16 Module	142 x 230	56	8538	215/-	5
35720	18 Module	207 x 207	60	8538	237/-	5

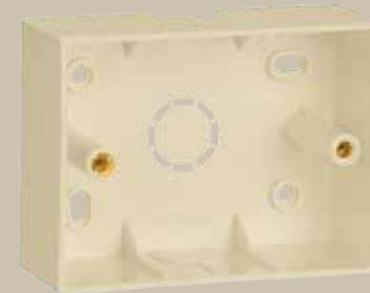
Code	Module	Size(mm)	Depth(mm)	HSN Code	MRP ₹/ Unit	Pkd
<b>CONCEALED GI SHEET METAL BOXES (16 Gauge)</b>						
Concealed Galvanised mounting boxes						
35785	1 or 2 Module	79 x 75	46	8538	81/-	10
35796	3 Module	79 x 99	46	8538	96/-	10
35800	4 Module	79 x 135	52	8538	124/-	10
35810	6 Module	79 x 207	52	8538	166/-	10
35832	8 or 9 Module Horizontal	79 x 230	52	8538	185/-	5
35821	8 Module Rectangular	132 x 135	56	8538	185/-	5
35843	12 Module	132 x 207	56	8538	236/-	5
35854	16 Module	142 x 230	56	8538	272/-	5
35865	18 Module	207 x 207	60	8538	326/-	5

NEW

## Concealed Stainless Steel Boxes



## Concealed Mounting Boxes



### Plastic Boxes

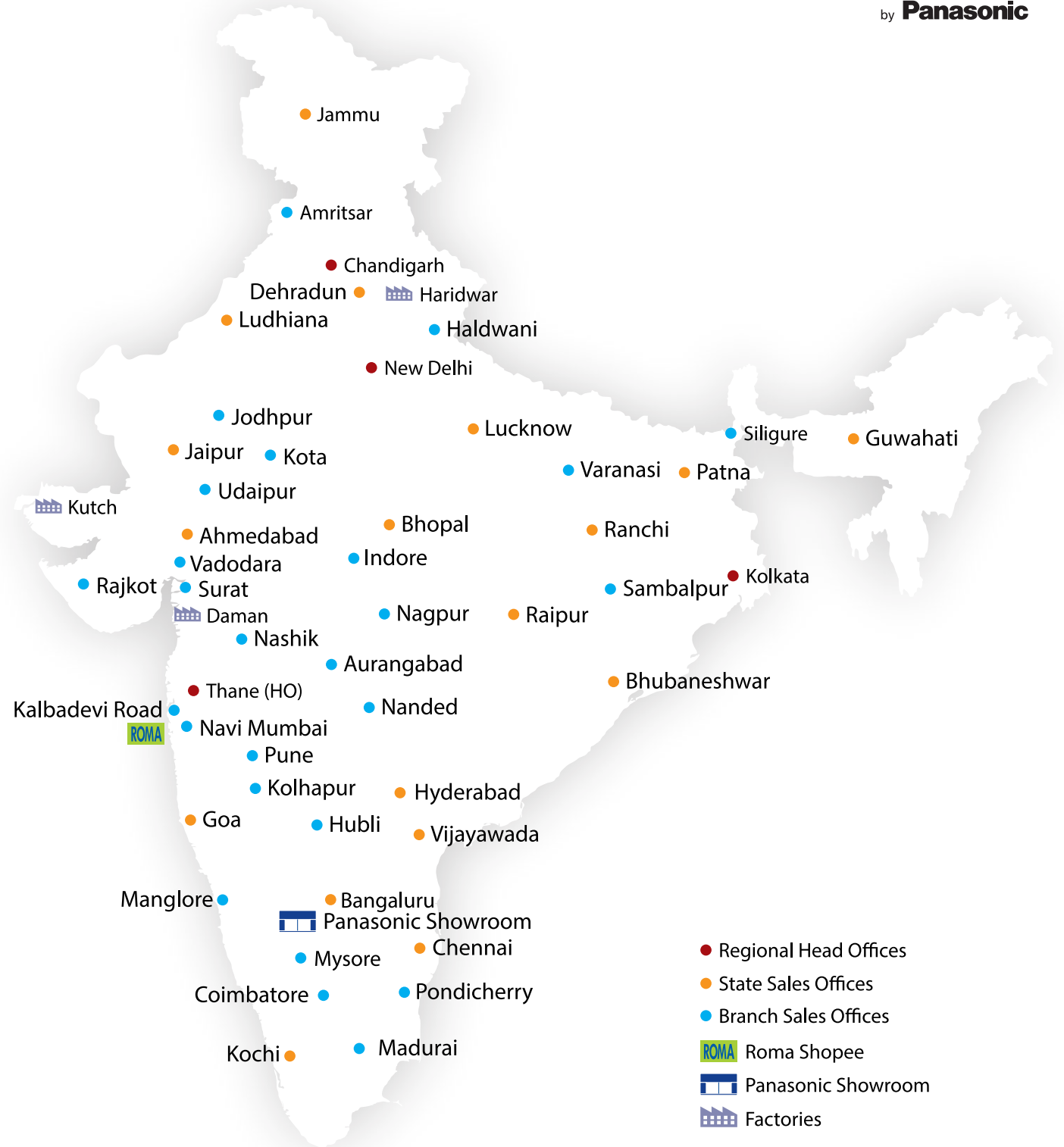
- High quality boxes made with High impact plastics
- Metal thread inserts

Code	Module	Size(mm)	Depth(mm)	HSN Code	MRP ₹/ Unit	Pkd
<b>STAINLESS STEEL METAL BOXES</b>						
36001	1 or 2 Module	79 x 75	46	8538	247/-	10
36002	3 Module	79 x 99	46	8538	285/-	10
36003	4 Module	79 x 135	52	8538	366/-	10
36004	6 Module	79 x 207	52	8538	489/-	10
36006	8 or 9 Module Horizontal	79 x 230	52	8538	576/-	5
36005	8 Module Rectangular	132 x 135	56	8538	576/-	5
36007	12 Module	132 x 207	56	8538	712/-	5
36008	16 Module	142 x 230	56	8538	804/-	5
36009	18 Module	207 x 207	60	8538	972/-	5

Code	Module	Size(mm)	Depth(mm)	HSN Code	MRP ₹/ Unit	Pkd
<b>SURFACE PLASTIC BOXES</b>						
21281	1 or 2 Module	85 x 85	40	8538	45/-	10
20449	3 Module	85 x 115	48	8538	57/-	10
21292	4 Module	85 x 145	48	8538	62/-	10
30511	6 Module	85 x 219	40	8538	81/-	10
30704	8 or 9 Module Horizontal	85 x 248	40	8538	114/-	5
20450	8 Module Rectangular	152 x 145	40	8538	114/-	5
20347	12 Module	153 x 214	40	8538	143/-	5
34567	16 Module*	153 x 259	40	8538	153/-	5

\*Not suitable for Woods - (Matrix, Stella Plate), Vision & Roma Plates

Code	Module	Size(mm)	Depth(mm)	HSN Code	MRP ₹/ Unit	Pkd
<b>CONCEALED PLASTIC BOXES</b>						
21237	1 or 2 Module	78 x 78	45	8538	35/-	10
21306	3 Module	75 x 103	52	8538	42/-	10
21248	4 Module	76 x 136	46	8538	55/-	10
21259	6 Module	76 x 205	50	8538	81/-	10
30475	8 or 9 Module Horizontal	78 x 229	50	8538	105/-	5
21260	8 Module Rectangular	135 x 133	51	8538	105/-	5
21270	12 Module	135 x 206	51	8538	131/-	5
21408	18 Module	204 x 207	51	8538	166/-	5



- Regional Head Offices
- State Sales Offices
- Branch Sales Offices
- ROMA Roma Showpee
- Panasonic Showroom
- Factories

HEAD / REGIONAL OFFICES

WEST (H.O.)

Anchor Electricals Pvt. Ltd.  
3<sup>rd</sup> Floor, B' Wing, I-Think Techno Campus,  
Pokhran Road No. 2, Thane (W)  
Thane, Maharashtra - 400607 | Tel: (9122) 30418888

EAST

Anchor Electricals Pvt. Ltd.  
4th Floor, Block " C ", Apeejay House  
15, Park Street, Kolkata, West Bengal - 700 016  
Tel: 033-32219196 / 082-32019196

NORTH-1

Anchor Electricals Pvt. Ltd.  
SCO-40, 1<sup>st</sup> Floor, NAC Manimajra, Chandigarh-160101,  
Tel: 0172-3255715

NORTH-2

Anchor Electricals Pvt. Ltd.  
6th Floor, TDI Centre, Jasola District, New Delhi - 110025  
Tel: 011-46006400

SOUTH

Anchor Electricals Pvt. Ltd.  
No. 8-12, III Floor, Prestige Nebula - II, Infantry Road,  
Bangalore, Karnataka - 560001 | Tel: 080-30284400-40

STATE / SALES OFFICES

NORTH-1

JAMMU

Anchor Electricals Pvt. Ltd.  
85/1-1<sup>st</sup> Floor, Trikuta Nagar,  
Jammu - 180012  
Tel: 0191-2470735 / 2470736

PUNJAB

B-20/2813/13-A,  
3<sup>rd</sup> Floor, Ranjit Tower,  
Pakhawal Road, Gurdev Nagar,  
Ludhiana 141001 (Punjab)  
Tel: 0161-4630796 / 013-32235077 / 78

AMRITSAR

Anchor Electricals Pvt. Ltd.  
45, Deep Complex, Court Road,  
Amritsar, Punjab - 143001  
Tel: 0183-3292567

UTTARAKHAND

Anchor Electricals Pvt. Ltd.  
Khasra No : 332-333-335 & 339,  
1<sup>st</sup> Floor, Main Saharanpur Road,  
Niranjanpur, Opp : Institute of  
Hotel Management, HCL Compound,  
Dehradun - 248 001  
Tel: 0135-3241686

HALDWANI

Anchor Electricals Pvt. Ltd.  
Shop No. U-28, Upper Ground Floor  
Phase - 1, Durga City Centre  
Haldwani - 263 141

NORTH-2

JAIPUR

Anchor Electricals Pvt. Ltd.  
224-225, 2<sup>nd</sup> Floor, Ganpati Plaza  
M.I. Road Jaipur,  
Rajasthan - 302001  
Tel: 0141-3007666 / 2331369

UDAIPUR

Anchor Electricals Pvt. Ltd.  
4C/201, Riddhi Siddhi  
Complex, Madhuvan, Udaipur,  
Rajasthan - 313001  
Tel: 0294-2422412

JODHPUR

Anchor Electricals Pvt. Ltd.  
27/20, Light Industrial Area,  
Near ITI Circle Jodhpur 342 003  
Tel: 029-12651000

KOTA

Anchor Electricals Pvt. Ltd.  
Office No. 6, Plot No. 621, 1<sup>st</sup> Floor,  
Mukesh Plaza, Dadabari, Kota,  
Rajasthan - 324009  
Tel: 0744-2500368

UTTAR PRADESH

Anchor Electricals Pvt. Ltd.  
201, Govinda Building, 1-A,  
Shahnaaz Road, Hazratgunj,  
Lucknow, Uttar Pradesh - 226001  
Tel: 0522-3920999

VARANASI

Anchor Electricals Pvt. Ltd.  
P. N. 204, H No. C-27/274 A-3,  
S-1, 2<sup>nd</sup> Floor, Dr. Jai Singh  
Building, Maldahiya, Varanasi,  
Uttar Pradesh - 221001  
Tel: 093-07142565

EAST-1

WEST BENGAL

1<sup>st</sup> Floor, Hanshara House,  
Beside City Mall (Bazar Kolkata),  
Sevoke Road, Siliguri - 734001

ASSAM

Anchor Electricals Pvt. Ltd.  
Duhang Arcade 2A, 2<sup>nd</sup> Floor,  
G. S Road, Tarun Nagar,  
Opp. Dona Plannet, Guwahati, Assam - 781005  
Tel: 0361-2450577

EAST-2

BIHAR

Anchor Electricals Pvt. Ltd.  
F-1, 1<sup>st</sup> Floor, Gitanjali Palace, Jamal  
Road, Patna, Bihar - 800001  
Tel: 0612-3297075

ODISHA

Anchor Electricals Pvt. Ltd.  
2<sup>nd</sup> Floor, Creative Plaza, Rasulgarh  
Square, Mouza-Bomikhal  
Bhubaneswar, Odisha - 751010  
Tel: 0674-3240109

SAMBALPUR

Anchor Electricals Pvt. Ltd.  
Quality Mansion, 1<sup>st</sup> Floor, Nayapada,  
Sambalpur, Odisha - 768001  
Tel: 093-37780450

RANCHI

Anchor Electricals Pvt. Ltd.  
509, 5<sup>th</sup> Floor, R. R Tower, Opp.  
Akashwani, (Near New Market Chawk)  
Ratu Road, Ranchi, Jharkhand - 834005  
Tel: 0651-3241617

WEST

GOA

Anchor Electricals Pvt. Ltd.  
403, Gera Imperium II, 4<sup>th</sup> Floor,  
Patto Panjim, Goa - 403001  
Tel: 0832-3294189 / 3193131

PUNE

Anchor Electricals Pvt. Ltd.  
Fiith Avenue, office No.E4-A, 4<sup>th</sup> Floor,  
Dhole Patil Road, Pune - 411001  
Tel: 020-66207260

NANDED

Anchor Electricals Pvt. Ltd.  
101 Millennium Tower, Bhawsar  
Chowk, Malegaon Road,  
Taroda, Nanded - 431605  
Tel: 02462-266855

NAGPUR

Anchor Electricals Pvt. Ltd.  
Tapashiya, 1<sup>st</sup> Floor, Near Rahale  
Hospital, Adamsha Chawk,  
Nagpur - 440008  
Tel: 09370430999

AURANGABAD

Anchor Electricals Pvt. Ltd.  
Plot No. 8, Raj Tower, 2<sup>nd</sup> Floor,  
Near Angethi Hotel, Jalna Road,  
Aurangabad - 431001  
Tel: 0240-6500200

KOLHAPUR

Anchor Electricals Pvt. Ltd.  
1<sup>st</sup> Floor, Office No. 4, Namdev Nest  
Above Axis Bank, Opp. Kamla College  
Rajarampuri, Takala, C. S. No. 1160B  
Kolhapur-416001  
Tel: 0231-6050945

NASHIK

Anchor Electricals Pvt. Ltd.  
Archit Icon, 1<sup>st</sup> Floor, Patil Lane Road,  
Nashik - 422005.

KALBADEVI ROAD

Anchor Electricals Pvt. Ltd.  
C-369/485, Takwadi, Behind  
Bank of India, 485, Kalbadevi Road,  
Mumbai, Maharashtra - 400002  
Tel: 022-39567073

NAVI MUMBAI

Anchor Electricals Pvt. Ltd.  
Arenja Corner, 3<sup>rd</sup> Floor, 301,  
Sector 17, Vashi, Navi Mumbai,  
Maharashtra - 407003  
Tel: 022-65551316

CHHATTISGARH

Anchor Electricals Pvt. Ltd.  
318-317 (A to E), Ravi Bhavan,  
3<sup>rd</sup> Floor, Jaistambh Chowk,  
Raipur - 492001  
Tel: 0771-3291701

GUJRAT

Anchor Electricals Pvt. Ltd.  
405, 3<sup>rd</sup> Eye one complex, Opp.  
Havmor Restaurant, Panchvati, C.G.  
Road, Ahmedabad, Gujarat - 380006  
Tel: 079-30063870 / 26460172

SURAT

Anchor Electricals Pvt. Ltd.  
403, 4<sup>th</sup> Floor, Union Trade Centre,  
Above Passport Office, Udhana  
Darwaja, Ring Road, Surat,  
Gujarat - 395002  
Tel: 0261-3002008 / 0261-3002009

VADODARA

Anchor Electricals Pvt. Ltd.  
306, Atlantis, Near Croma, Genda  
Circle Road, Vadodara,  
Gujarat - 390007  
Tel: 0265-6541992

RAJKOT

Anchor Electricals Pvt. Ltd.  
Office No. 502, 5<sup>th</sup> Floor, King's Plaza,  
Astrone Chowk, Sardar Nagar,  
Main Road, Rajkot,  
Gujarat - 360001  
Tel: 0281-3010400

INDORE

Anchor Electricals Pvt. Ltd.  
318, 3<sup>rd</sup> Floor, D.M. Tower, 21/1  
Race Course Road, Indore,  
Madhya Pradesh - 452003.  
Tel: 0731-3952501 / 05

BHOPAL

Anchor Electricals Pvt. Ltd.  
201, Manya Arcade, 2<sup>nd</sup> Floor,  
Plot No. 30, MP Nagar, Zone II,  
Bhopal, Madhya Pradesh - 462011  
Tel: 075-53061815 / 816

SOUTH

TELANGANA

Anchor Electricals Pvt. Ltd.  
G2 1-8 384/385, Gowra Grand,  
S. P. Road, Begumpet,  
Secunderabad,  
Andhra Pradesh - 500003  
Tel: 040-30482989 / 2999

BANGALORE

Anchor Electricals Pvt. Ltd.  
Prestige Nebula - II, 3<sup>rd</sup> Floor  
Block 2nd, Infemity Road, Cubbon Rd  
Bangaluru - 560001  
Tel: 080-30284400 / 01

MANGALORE

Anchor Electricals Pvt. Ltd.  
225, 1<sup>st</sup> Floor, Ideal Tower  
Opp Saravu Ganpathi Temple  
Hampanakatta,  
MANGALORE - 575 001

MYSORE

Anchor Electricals Pvt. Ltd.  
Nakshatra, No. 858/859,  
CS 20 K. R. Mohalla, Narayana  
Shastry Road, Mysore,  
Karnataka - 570024

HUBLI

Anchor Electricals Pvt. Ltd.  
A/122-146, 2<sup>nd</sup> Floor, Mahalaxmi  
Mansion, Above Axis Bank,  
New Cotton Market  
Despande Nagar, Hubli - 580029  
Tel: 0836-3296694

ANDHRA PRADESH

Anchor Electricals Pvt. Ltd.  
Door No. 39/10/5, V.N.R. Tower,  
2<sup>nd</sup> Floor, Labbipet, Dist, Krishna,  
Vijaywada - 520010  
Tel: 0866-3056789

KERALA

Anchor Electricals Pvt. Ltd.  
K. P. Varkey & Madathiparambi  
Complex, 1<sup>st</sup> Floor, 351/1085D,  
Palarivattom, Cochin - 683525  
Tel: 0484-3951000 / 01

TAMILNADU

Anchor Electricals Pvt. Ltd.  
Level 3, Ispanani Centre, 123-124,  
Nungambakkam High Road,  
Chennai, Tamilnadu - 600034  
Tel: 044-30261700 / 01

COIMBATORE

Anchor Electricals Pvt. Ltd.  
Balavasantha Complex, No.1  
Bharthi Park, Cross Road 2,  
NSR Road, Saibaba Colony  
Coimbatore, Tamilnadu- 641 011

MADURAI

Anchor Electricals Pvt. Ltd.  
Wise House, Door No.109  
Vakil New Street, Madurai,  
Tamilnadu - 625001  
Tel: 0452-3720898 / 99

PONDICHERRY

Anchor Electricals Pvt. Ltd.  
201, 1<sup>st</sup> Floor, Mission Street,  
Pondicherry, Tamilnadu - 605001  
Tel: 0413-3190071 / 3190081