



Smart solutions.
Strong relationships.

*In our continuous efforts of striving to give you the best, design and specifications are subject to change without prior notice.

REGIONAL SALES OFFICES

NORTHERN REGION

Delhi Vandana, 11-Tolstoy Marg, New Delhi - 110 001 Tel.: (011) 3041 6300/312/329, 2331 2024 Fax: (011) 2332 4360, 2335 2134, 2372 5661
Lucknow Saran Chambers II, 3rd Floor, 5 Park Road, Lucknow - 226 001 Tel.: (0522) 301 8850-79 Fax: (0522) 301 8858
Jalandhar BX1 1-407, 2nd Floor, Ladowali Road, Near BSF Chowk, Jalandhar City - 144 001 Tel.: (0181) 305 1304/324 0990-93 Fax: (0181) 222 6342
Jaipur Church Road, P. O. Box - 173, Jaipur - 302 001 Tel.: (0141) 301 8800/801. Fax: (0141) 236 5371

EASTERN REGION

Kolkata 50, Chowringhee Road, Kolkata - 700 071 Tel.: (033) 2282 9681-85 Fax: (033) 2282 9942
Guwahati Assam Investment & Construction Co., G. S. Road., Guwahati - 781 005 Tel.: (0361) 234 4704 / 234 1079
Patna Sahyogi Press Marg, Exhibition Road, Patna - 800 001 Tel.: (0612) 221 2751 Fax: (0612) 221 2751
Ranchi Ess Ess Agencies, Uphar Cinema Campus, Ratu Road, Ranchi - 854 005 Tel.: (0651) 228 1187 Fax: (0651) 228 1187
Bhubaneswar Janpath Tower, 3rd Floor, Ashok Nagar, Unit II, Bhubaneswar - 751 009 Tel.: (0674) 253 1128 / 253 1429 / 253 1277 Fax: (0674) 253 3521

WESTERN REGION

Mumbai Western Region, Kanjur Marg (E), Mumbai - 400 042 Tel.: (022) 6755 8000/8606/8629-31 Fax: (022) 6755 8669/2579 5158
Pune Premium Point Building, 4th Floor, Opp. Modern High School, Junglee Maharaj Road, Pune - 411 005 Tel.: (020) 2553 4675-77 Fax: (020) 2553 4684
Nagpur 3, West High Court Road, L. B. Shastri Chowk, Dharampeth, Nagpur - 440 010 Tel.: (0712) 253 1271/256 0870-71 Fax: (0712) 253 7196
Ahmedabad 906 - 916, Sakar II, Near Ellis Bridge Police Stn., Ahmedabad - 380 006 Tel.: (079) 4001 2000/2201/2266-69 Fax: (079) 4001 2222
Indore 103 - B, Apollo Trade Centre, 2B Rajgarh Kothi, Mumbai-Agra Road, Indore - 452 001 Tel.: (0731) 249 8269/8271/5531 Fax: (0731) 406 5621
Raipur 5, New Tilak Nagar, Beside Sai Care Hospital, Avanti Vihar, Raipur - 492 001 Tel.: (0771) 402 2214/15 Fax: (0771) 244 4577

SOUTHERN REGION

Chennai 3, Dr. MGR Salai (K. H. Road), Nungambakkam, Chennai - 600 034 Tel.: (044) 4224 7500/7600/7575 Fax: (044) 2823 1973/2823 4112
Madurai 2, 3 Mangayarkarasi College Road, Paravai, Madurai - 625 402 Tel.: (0452) 266 7771/7697 Fax: (0452) 266 7772
Coimbatore No. 658 - 664, Rajalakshmi Plaza, 100 ft Road, Gandhipuram, Coimbatore - 641 012 Tel.: (0422) 252 6453/1829/1830 Fax: (0422) 252 5334
Kochi Cherupushpam Bldg., 5th Floor, 300 - 6, Shanmugham Road, Ernakulam, Kochi - 682 031 Tel.: (0484) 237 0860-863/236 0240 Fax: (0484) 237 3738
Bangalore First Floor, Janardhana Towers, 562/640, Bannerghatta Main Road, Bilekehalli, Bangalore - 560 076 Tel.: (080) 4139 1908/1909 Fax: (080) 4139 1900
Secunderabad Minerva Complex, 4th Floor, 94, Sarojini Devi Road, Secunderabad - 500 003 Tel.: (040) 4000 2300/2347/2345/2309 Fax: (040) 4000 2340

For Any Service Related Queries, Contact: 0832-233 1230. E-mail: custcare.fan@cgglobal.com

For Export Related Queries, Contact: 0832-233 1235. E-mail: fan.export@cgglobal.com

For all complaints & service issues call TOLL FREE : 1800-419-0505

Crompton Greaves Limited Fans & Appliances Division

Plot No. 1, Goa IDC Industrial Estate, Bethora, Ponda, Goa 403 409, India
T : +91 832 233 1230 F : +91 832 233 0155

Registered Office:
CG House, 6th Floor, Dr. Annie Besant Road, Worli, Mumbai 400 030, India
W : www.cgglobal.com



INDUSTRIAL FANS

FOR TROUBLE FREE PERFORMANCE IN INDUSTRIES



INDUSTRIAL FANS

INDUSTRIAL FANS

The Revolving Precision from Crompton

Crompton Greaves Ltd. manufactures External Motors, Axial Flow Fans and Centrifugal Blowers. These products are used for a wide range of Industrial and HVAC applications as detailed in this catalogue. Our External Rotor Motors are manufactured to EN 60335-1 standards and bears the CE mark of quality.

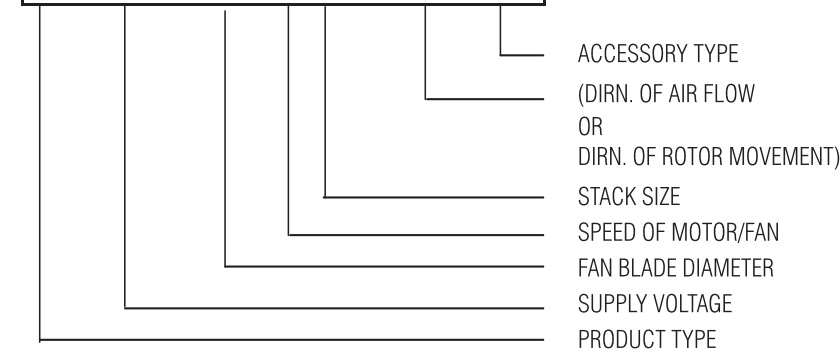
CGL has an extensive manufacturing facility, equipped with state-of-the-art machinery and can deliver to bulk requirements. It has an experienced team of workmen and an excellent infrastructure base, plus years of experience in this particular field and hence can cater to customer requirements. CGL products are well known in the market for their quality and reliability. Every product goes through stringent quality checks and controls to ensure product quality, reliability and trouble free performance.

CGL is a leader in the development and implementation of new technology leading to the innovation of new products. The Company is also dedicated to manufacturing and supplying innovative high quality products. Crompton Greaves products are trusted and can be used wherever product quality and reliability is of extremely high importance.

TYPE KEY

EXAMPLE

FA	23/	20	28	S2	/	R	BG
----	-----	----	----	----	---	---	----



PRODUCT TYPE

MO72	Motor having 72 mm Rotor
MO92	Motor having 92 mm Rotor
MO110	Motor having 110 mm Rotor
FA	Axial Flow Fan
SI	Single Inlet Blower
DI	Double Inlet Blower
BC	Backward Curved Fan
CFF	Cross Flow Fan

SUPPLY VOLTAGE

11	110 Volts, 60 Hz AC
23	220/230 Volts, 50 Hz AC
44	415 Volts, AC, 50 Hz, 3 Phase

SPEED OF MOTOR / FAN

14	4 Pole Motor
28	2 Pole Motor

FAN BLADE DIAMETER

AXIAL FLOW		BACKWARD CURVED FANS		SINGLE INLET BLOWER		DOUBLE INLET BLOWER	
20	200 mm Blade diam.	190	Impeller Diam.	133	Impeller Diam. in mm	133 X 120	Impeller Dimensions in mm
25	250 mm Blade diam.	220	Impeller Diam.	140	Impeller Diam. in mm	133 X 180	Impeller Dimensions in mm
30	300 mm Blade diam.			160	Impeller Diam. in mm	146 X 180	Impeller Dimensions in mm
35	350 mm Blade diam.			180	Impeller Diam. in mm	180 X 180	Impeller Dimensions in mm
40	400 mm Blade diam.			225	Impeller Diam. in mm	180 X 200	Impeller Dimensions in mm
45	450 mm Blade diam.						
CROSS FLOW FANS							
		100 X 325	Impeller Dimensions				
		125 X 330	Impeller Dimensions				

DIRN. OF ROTOR MOVEMENT	DIRN. OF AIR FLOW	ACCESSORY TYPE	STACK SIZE
		FG Flat Grill BG Basket Grill EX Exhaust Fan H Housing	S1 15 mm stack S2 25 mm stack S3 or K3 35 mm stack S4 or K4 45 mm stack K5 55 mm stack

CENTRIFUGAL BLOWERS

These blowers normally use forward curved impellers made of galvanized steel, which are press fitted on the rotor of external rotor motor, making the unit compact. The rotor with impeller is dynamically balanced in two planes, for vibration free running during its entire life. The assembly of motor and Impeller is essentially mounted in a technically designed housing for optimum performance. The External Rotor Motor is cooled with the air stream flowing over it.

SINGLE INLET - Single inlet signifies that the Air is drawn from one side of the Blower only.

DOUBLE INLET - Double inlet signifies that the Air is drawn in from two sides of the Blower and exited from one

APPLICATIONS

- Cooling AC/DC drives
- Air Balloons as an advertising media
- HVAC applications
- Applications with relatively small Air Volumes with high static pressure and low noise levels

CENTRIFUGAL BLOWERS SINGLE INLET

Specifications (50 Hz)

MODEL	ROTOR DIAM MM	IMPELLER DIAM MM	VOLTAGE V	AMPS A	WATTS W	SPEED RPM	AIR VOLUME M3/HR
1400 RPM							
SI 23/13314/H	92	133	230	0.20	50	1300	175
SI 23/14014/H	92	140	230	0.30	70	1400	350
SI 23/16014/H	92	160	230	0.38	90	1400	450
SI 23/18014/H	92	180	230	0.45	110	1300	600
SI 44/18014/H	110	180	415	0.30	160	1350	700
SI 23/22514/H	110	225	230	0.90	225	1200	900
SI 44/22514/H	110	225	415	0.60	260	1300	950
2800 RPM							
SI 23/13328/H	92	133	230	0.20	45	2050	225
SI 23/14028/H	92	140	230	0.32	75	2100	425
SI 44/14028/H	92	140	415	0.20	80	2200	450
SI 23/16028/H	92	160	230	0.65	150	1900	600
SI 44/16028/H	92	160	415	0.30	170	2000	650
SI 23/18028/H	110	180	230	1.20	260	2300	750
SI 44/18028/H	110	180	415	0.40	280	2400	800

(60 Hz on request)

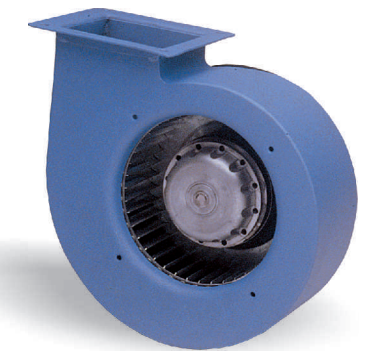
CENTRIFUGAL BLOWERS DOUBLE INLET

Specifications (50 Hz)

MODEL	ROTOR DIAM MM	IMPELLER DIAM MM	VOLTAGE V	AMPS A	WATTS W	SPEED RPM	AIR VOLUME M3/HR
1400 RPM							
DI 23/133X120/14/H	92	133X120	230	0.20	50	1050	275
DI 23/133X180/14/H	92	133X180	230	0.30	65	1100	500
DI 23/146X180/14/H	92	146X180	230	0.45	100	1200	660
DI 23/160X150/14/H	92	160X150	230	0.40	90	1150	700
DI 23/180X180/14/H	110	180X180	230	1.10	210	1290	1200
DI 23/180X200/14/H	110	180X200	230	1.10	236	1200	1600
2800 RPM							
DI 23/133X120/28/H	92	133X120	230	0.40	90	1720	400
DI 23/133X180/28/H	92	133X180	230	0.70	160	1800	700
DI 44/133X180/28/H	92	133X180	415	0.35	175	2000	750
DI 23/146X180/28/H	92	146X180	230	0.90	200	1560	826
DI 44/146X180/28/H	92	146X180	415	0.43	265	1900	900
DI 23/160X150/28/H	92	160X150	230	0.70	160	1100	750
DI 44/160X150/28/H	92	160X150	415	0.35	175	1150	825

(60 Hz on request)

MOTORS USED IN THESE FANS ARE CE MARKED

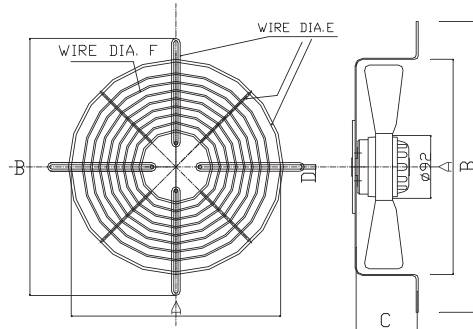
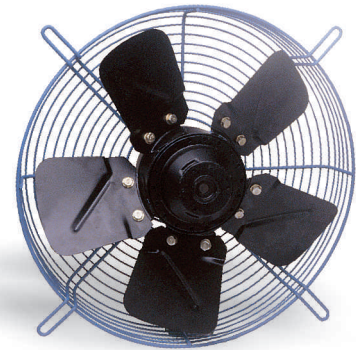


INDUSTRIAL FANS

INDUSTRIAL FANS

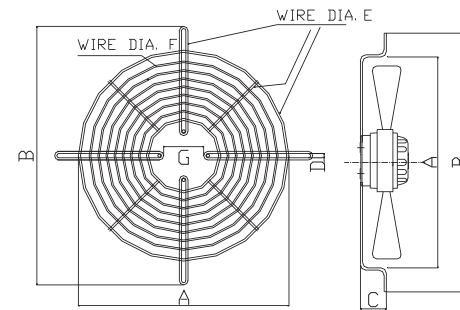
FAN ACCESSORIES

BASKET GRILL



BASKET GRILL DIMENSIONS (BLADE TOTALLY COVERED)

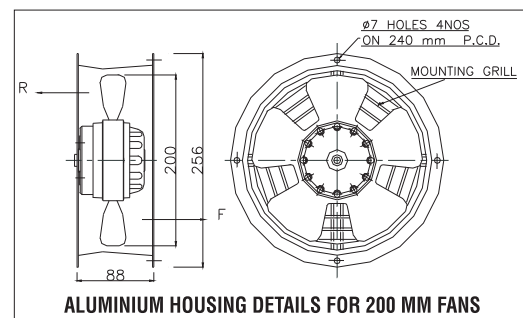
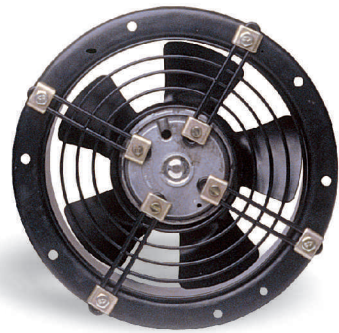
FAN DIA	A mm	B mm	C mm	D mm	E mm	F mm
200	210	275	78	7	3	2
300	330	390	88	7	4	2.5
350	375	440	100	8.5	4	3



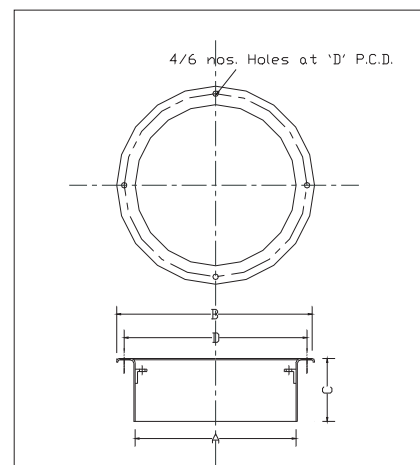
BASKET GRILL DIMENSIONS (BLADE PARTIALLY COVERED)

FAN DIA	A mm	B mm	C mm	D mm	E mm	F mm	G mm
250	270	320	45	7	4	3	40
300	330	390	50	7	4	3	40
350	375	440	55	8.5	4	3	76
400	430	495	60	8.5	4	3	76
450	480	550	65	8.5	5	4	76

ROUND HOUSING

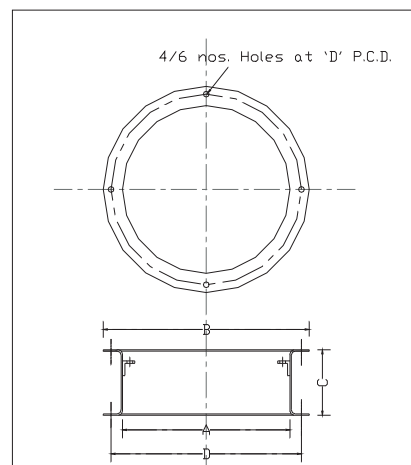


ALUMINIUM HOUSING DETAILS FOR 200 MM FANS



BLADE DIA	A	B	C	D	No. of Holes	Sheet Thickness
200	205	252	90	233	4	16 SWG
245	250	300	90	280	6	16 SWG
300	310	360	90	335	6	16 SWG

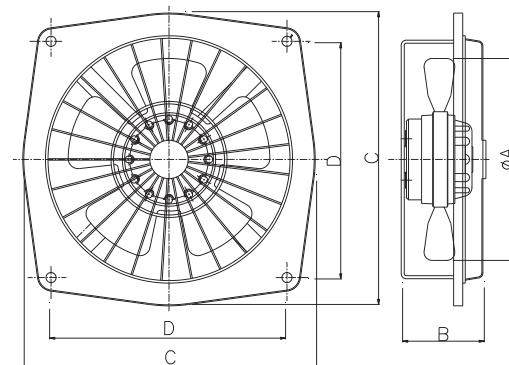
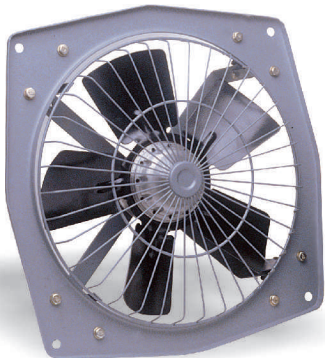
SINGLE FLANGE HOUSING DIMENSIONS (MS)



BLADE DIA	A	B	C	D	No. of Holes	Sheet Thickness
200	205	252	90	233	4	16 SWG
245	250	300	90	280	6	16 SWG
300	310	360	90	335	6	16 SWG

DOUBLE FLANGE HOUSING DIMENSIONS (MS)

EXHAUST FANS



EXHAUST FAN FRAME DIMENSIONS

MODEL	A mm	B mm	C mm	D mm
FA*/200*/EX	200	88	290	235
FA*/300*/EX	300	110	390	320
FA*/350*/EX	350	135	470	380
FA*/450*/EX	450	160	555	455

SALIENT FEATURES OF EXTERNAL ROTOR MOTORS

- Compact in Size • Continuous Rating with High Efficiency • Variable speed by changing Input Voltage or Frequency
- Dynamically balanced in 2 planes as per grade 2.5 of ISO 1940-1973 in accordance to VDI 2060 • Winding Surge and H.V. Tested

APPLICATIONS

- CROSS FLOW FANS • AXIAL FLOW FANS • CENTRIFUGAL FANS (BACKWARD CURVED) • CENTRIFUGAL BLOWERS

CROSS FLOW FANS

These fans use impellers where the diameter is less compared to its length. Air outlet is at a low velocity ensuring low noise level. Impeller is made of aluminium, galvanized steel or engineering plastics, and coupled with external rotor motor with extended shaft. The assembly is duly balanced in two planes to ensure vibration free running.

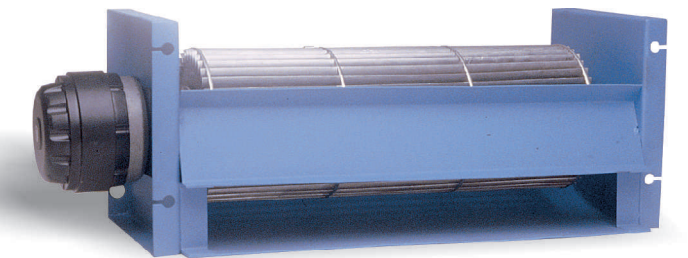
APPLICATIONS

- Lift Cabin Cooling • Electrical Panel Cooling
- HVAC Applications • Applications that require low air velocity

SPECIFICATIONS (50 Hz)

MODEL	ROTOR DIAM MM	IMPELLER DIMENSIONS MM	VOLTAGE V	AMPS A	WATTS W	AIR VOLUME M3/HR
CFF23/100X325/28/H	92	100X325	230	0.23	65	300
CFF23/125X330/14/H	92	125X330	230	0.23	60	400

(60 Hz on request)



CENTRIFUGAL FAN BACKWARD CURVED

These fans use Backward Curved Impellers made of steel or engineering plastics. The impellers are press fitted on the external rotor and dynamically balanced in two planes. Backward Curved Fans can be used with or without scroll Housing, and find its application in sucking operations and where static required at Fan Inlet is high.

APPLICATIONS

- Roof Extractors • Electrical Panel Cooling • Thyristor Panel Cooling
- And in applications that require greater Static pressure at the inlet

SPECIFICATIONS FOR CENTRIFUGAL FANS (50 Hz) (BACKWARD CURVED)

MODEL	ROTOR DIAM MM	VOLTAGE V	AMPS A	WATTS W	SPEED RPM	AIR VOLUME M3/HR
BC 23/19028/S1	92	230	0.21	45	2400	450
BC 44/19028/S2	92	415	0.18	65	2700	500
BC 23/22028/S2	92	230	0.27	65	2400	725
BC 23/22028/S3	92	230	0.36	82	2650	800
BC 44/22028/S2	92	415	0.18	70	2400	725
BC 44/22028/S3	92	415	0.22	80	2700	830

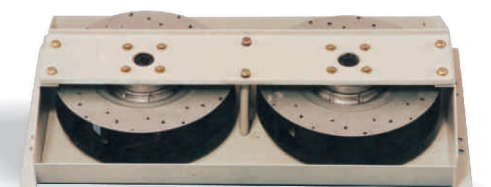
(60 Hz on request)



CENTRIFUGAL FAN SINGLE ASSEMBLY



CENTRIFUGAL FAN DOUBLE ASSEMBLY



MOTORS USED IN THESE FANS ARE **CE** MARKED

INDUSTRIAL FANS

INDUSTRIAL FANS

AXIAL FLOW FANS

Axial Flow Fans have one piece construction blades upto 350 mm sweep and 5 nos. independent blades riveted/bolted on a fan hub for fans above 350 mm sweep. The blade is press fitted to the rotor and the assembly dynamically balanced in two planes to grade 2.5 of ISO 1940. Various accessories such as round housing, conventional exhaust frames and a variety of grills and brackets are available to mount the fan to suit individual needs. Temperature rise tests taken at manufacturing stage ensures fail proof running throughout its life.

APPLICATIONS

- Instrumentation and Electrical Panel Cooling • UPS System
- Condenser Fans in Air Conditioning & Refrigeration • Walk in Coolers and Deep freezers
- Welding Sets and Rectifiers • Lift cabin fans • Industrial & Domestic Exhaust Fans
- Other application that need cooling with high air volume and low pressure

AXIAL FLOW FANS 92 mm SPECIFICATIONS FOR AXIAL FLOW FANS (50 Hz)

MODEL	BLADE DIA MM	VOLTAGE V	AMPS A	WATTS W	SPEED RPM	AIR VOLUME M3/HR
FA 23/2014/S1/*	200	230	0.12	30	1300	375
FA 23/2028/S1/*	200	230	0.20	42	1900	500
FA 23/2028/S2/*	200	230	0.25	55	2500	840
FA 44/2028/S2/*	200	415	0.20	75	2600	860
FA 23/2514/S2/*	250	230	0.25	60	1300	875
FA 23/2514/S3/*	250	230	0.30	72	1400	950
FA 23/2528/S2/*	250	230	0.33	79	2000	1200
FA 23/2528/S3/*	250	230	0.42	100	2600	1500
FA 44/2528/S3/*	250	415	0.25	110	2650	1600
FA 23/3014/S2/*	300	230	0.30	70	1200	1300
FA 23/3014/S3/*	300	230	0.40	90	1360	1750
FA 44/3014/S3/*	300	415	0.25	100	1360	1750
FA 23/3514/S3/*	350	230	0.32	82	900	2500
FA 23/3514/S4/*	350	230	0.55	122	1100	3000

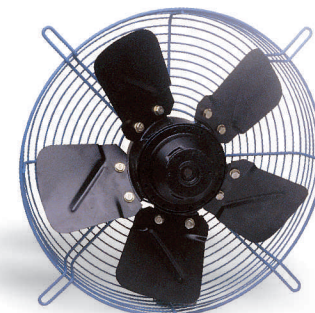
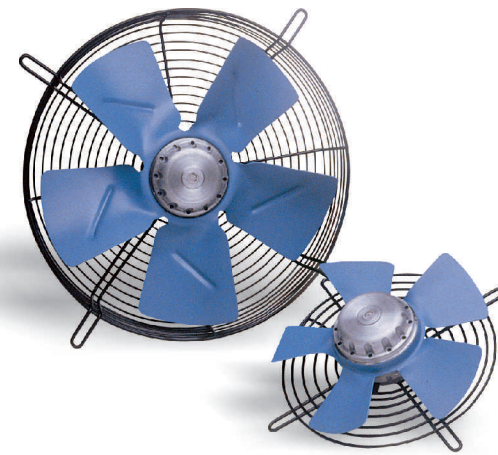
* denotes F or R (60 Hz on request)

AXIAL FLOW FANS 110 mm SPECIFICATIONS FOR AXIAL FLOW FANS (50 Hz)

MODEL	BLADE DIA MM	VOLTAGE V	AMPS A	WATTS W	SPEED RPM	AIR VOLUME M3/HR
FA 23/3514/K3/*	350	230	0.54	126	1260	3600
FA 23/3514/K3/*	350	415	0.35	140	1300	3700
FA 23/4014/K4/*	400	230	0.90	200	1160	4800
FA 44/4014/K4/*	400	415	0.40	220	1250	4900
FA 23/4514/K5/*	450	230	1.10	235	1000	6500
FA 44/4514/K5/*	450	415	0.80	260	1100	6700

* denotes F or R (60 Hz on request)

MOTORS USED IN THESE FANS ARE **CE** MARKED



EXTERNAL ROTOR MOTORS

SPECIFICATIONS FOR EXTERNAL ROTOR MOTORS (50 Hz)

(Rotor Diam. 92 mm) - 1400 RPM and 2800 RPM

MODEL	ROTOR DIAM MM	STACK SIZE MM	VOLTAGE V	AMPS A	WATTS W	SPEED RPM
MO92 2315/14	92	15	230	0.22	50	1400
MO92 2325/14	92	25	230	0.35	80	1400
MO92 2335/14	92	35	230	0.45	100	1400
MO92 2345/14	92	45	230	0.60	130	1400
MO92 2315/28	92	15	230	0.20	50	2800
MO92 2325/28	92	25	230	0.35	80	2800
MO92 2335/28	92	35	230	0.60	135	2800
MO92 2345/28	92	45	230	0.80	180	2800
MO92 4425/28	92	25	415	0.20	80	2800
MO92 4435/28	92	35	415	0.35	135	2800
MO92 4445/28	92	45	415	0.50	200	2800

(60 Hz on request)

SPECIFICATIONS FOR EXTERNAL ROTOR MOTORS (50 Hz)

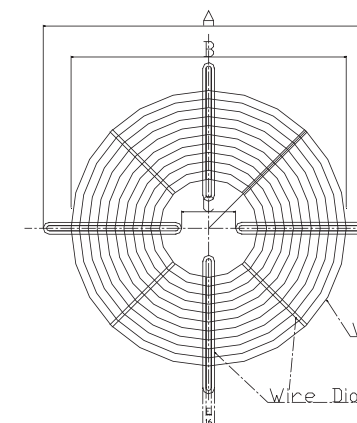
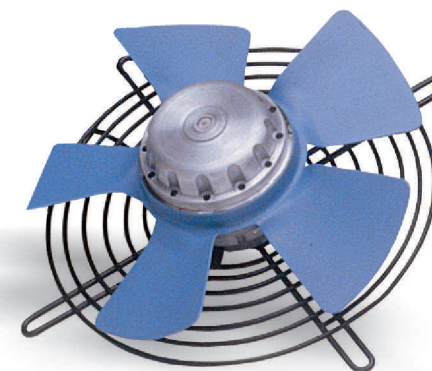
(Rotor Diam. 110 mm) - 1400 RPM AND 2800 RPM

MODEL	ROTOR DIAM MM	STACK SIZE MM	VOLTAGE V	AMPS A	WATTS W	SPEED RPM
MO110 2335/14	110	35	230	0.60	130	1400
MO110 2345/14	110	45	230	0.90	200	1400
MO110 2355/14	110	55	230	1.20	260	1400
MO110 4435/14	110	35	415	0.40	160	1400
MO110 4445/14	110	45	415	0.55	200	1400
MO110 4455/14	110	55	415	0.65	260	1400
MO110 2335/28	110	35	230	0.75	160	2800
MO110 2345/28	110	45	230	1.10	250	2800
MO110 2355/28	110	55	230	1.40	320	2800
MO110 4435/28	110	35	415	0.50	175	2800
MO110 4445/28	110	45	415	0.65	260	2800
MO110 4455/28	110	55	415	0.80	330	2800

(60 Hz on request)

FAN ACCESSORIES

FLAT GRILLS



GRILL DETAILS	A	B	C	WIRE DIA D	WIRE DIA E	F
200 MM FAN	255	205	40	4	3	7
250 MM FAN	300	235	40	4	3	7
300 MM FAN	355	290	40	4	3	7
350 MM FAN	440	372	76	5	4	8.5
400 MM FAN	485	430	76	5	4	8.5

INDUSTRIAL FANS

INDUSTRIAL FANS

AIR CURTAIN

TABLE OF STANDARD MODELS

MODEL	DIMENSIONS W X H X L (cms)	VELOCITY m/SEC@ 50 mm	MOTOR RATING	PHASE	FULL LOAD WATTS / CURRENT	NOISE LEVEL db(A)	WEIGHT (kg.)
HIGH VELOCITY							
CGHV2F	295 X 280 X 610	12-13	1/4	SINGLE	250 / 1.2	60	16
CGHV3F	295 X 280 X 915	12-13	1/4	SINGLE	250 / 1.2	62	18
CGHVIM	295 X 280 X 1000	12-13	1/4	SINGLE	250 / 1.2	65	19
CGHV4F	295 X 280 X 1220	12-13	1/4	SINGLE	250 / 1.2	65	22
CGHV5F	295 X 280 X 1525	12-13	1/3	SINGLE	415 / 2.0	62	24
CGHV6F	295 X 280 X 1830	12-13	2 X 1/4	SINGLE	500 / 2.4	68	35
CGHV2M	295 X 280 X 2000	12-13	2 X 1/4	SINGLE	500 / 2.4	68	37
EXTRA HIGH VELOCITY							
CGEHV2F	340 X 325 X 610	15-16	1/4	SINGLE	320 / 1.5	66	19
CGEHV3F	340 X 325 X 915	15-16	1/4	OPTIONAL	320 / 1.5	68	21
CGEHVIM	340 X 325 X 1000	15-16	1/4	OPTIONAL	320 / 1.5	70	22
CGEHV4F	340 X 325 X 1220	15-16	1/3	OPTIONAL	415 / 2.0	70	25
CGEHV5F	340 X 325 X 1525	15-16	1/2	OPTIONAL	620 / 2.9	68	28
CGEHV6F	340 X 325 X 1830	15-16	2 X 1/4	OPTIONAL	640 / 3.0	72	40
CGEHV2M	340 X 325 X 2000	15-16	2 X 1/4	OPTIONAL	640 / 3.0	72	42
TURBO							
CGT3F	340 X 325 X 915	18-20	1/2	OPTIONAL	620 / 2.9	68	22
CGTIM	340 X 325 X 1000	18-20	1/2	OPTIONAL	620 / 2.9	70	24
CGT4F	340 X 325 X 1220	18-20	1/2	OPTIONAL	620 / 2.9	70	27
CGT5F	340 X 325 X 1525	18-20	1	3 PHASE	1 HP / 1.2	68	35
CGT6F	340 X 325 X 1830	18-20	1	3 PHASE	2 HP / 2.1	72	45
CGT2M	340 X 325 X 2000	18-20	1	3 PHASE	2 HP / 2.1	72	50
HORIZONTAL FLY STOP							
CGHFS3F	380 X 380 X 915	20-22	1	3 PHASE	1 HP / 1.4	70	33
CGHFSIM	380 X 380 X 1000	20-23	1	3 PHASE	1 HP / 1.4	70	34
CGHFS4F	380 X 380 X 1220	20-23	2	3 PHASE	1 HP / 1.9	72	40

In case of three phase motors to achieve reverse operation, fit the impeller on shaft in reverse direction and interchange positions of RED and BLUE wires from motor in the terminal block.

EXTERNAL ROTOR MOTORS

The External Rotor Motor, like any other conventional motor, has a wound stator and an aluminium die cast rotor. The only difference is that in this case the rotor moves externally around the stator.

MOTORS 72 mm

Motors with 72 mm diameter rotors can be made to draw upto a maximum of 40 Watts Input Power.

MOTORS 92 mm

Motors with 92 mm diameter rotors can be made to draw upto a maximum of 150 Watts Input Power.

MOTORS 110 mm

Motors with 110 mm diameter rotors can be made to draw upto maximum of 350 Watts Input Power.

SPECIFICATIONS FOR EXTERNAL ROTOR MOTORS (50 Hz)

(Rotor Diam. 72 mm) - 2900 RPM

MODEL	ROTOR DIAM MM	STACK SIZE MM	VOLTAGE V	AMPS A	WATTS W	SPEED RPM
MO72S 2320/28	72	20	230	0.18	28	2900
MO72S 2325/28	72	25	230	0.22	35	2900

(60 Hz on request)



HEAVY DUTY EXHAUST FANS

EXHD Series Exhaust Fan - A heavy duty exhaust fan suitable for a wide range of applications.

Special Features

- Totally enclosed highly efficient heavy duty motor with pressure die cast aluminium rotor mounted on two ball bearings.
- Aerodynamically contoured blades handle maximum air with minimum power consumption.
- Rigid frame with rubber mountings for silent operation.
- Epoxy powder coating with specially pretreated components for better resistance to corrosion and acid alkali fumes.
- For more corrosive environment, exhaust fans with chlorinated rubber paints are available.
- With IP55 specification

Applications

- Heavy duty exhaust fans are ideal for use in industries, industrial canteens, kitchens, paint shops, hotels, theatres and auditoriums.
- It is also extensively used by OEM customers for paint booths, room coolers, welding equipment, cold storage units, flour mills, milk dairies, food and processing units, strong rooms, battery rooms for exhausting stale hot air and supplying fresh air.
- EXHD exhaust fan goes a long way in providing a healthy environment and making life more comfortable.



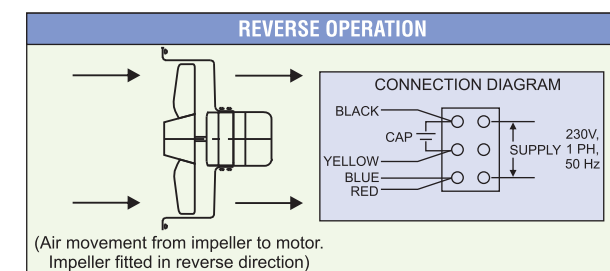
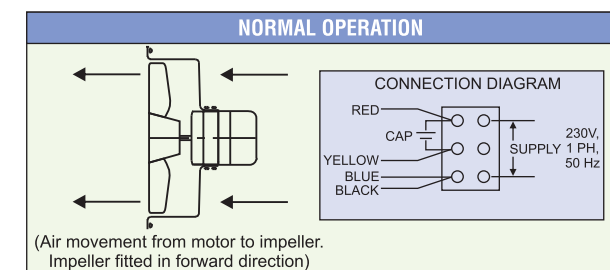
SELECTION CRITERIA AND RECOMMENDED MINIMUM FRESH AIR SUPPLY

APPLICATIONS	NUMBER OF AIR CHANGES/HR
RESIDENCES, STORAGE AREAS	1 - 2
LIBRARIES, CLASS ROOMS	2 - 4
ASSEMBLY HALLS, LABS	4 - 6
LAVATORIES, BARS, HOSPITALS WARDS	6 - 8
THEATRES, WORKSHOPS, GARAGES	6 - 10
CAFES, CANTEENS	8 - 12
RESTAURANTS, LAUNDRIES	10 - 15
BAKERIES, CANTEEN KITCHENS	15 - 30
BOILER HOUSES, ENGINE ROOMS	15 - 30
FOUNDARIES & FURNACE ROOMS	30 - 60

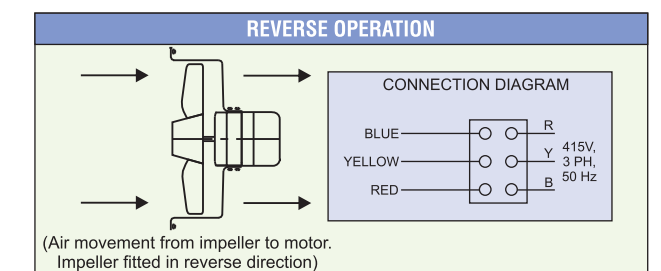
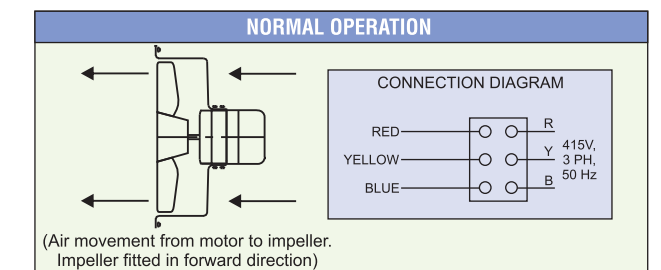
AIR SPACE / PERSON	AIR SUPPLY / PERSON	AIR CHANGES / HR
3 CUM	61 CUM/HR	20
6 CUM	40 CUM/HR	6.5
9 CUM	29 CUM/HR	3.2
12 CUM	21 CUM/HR	1.8

NORMAL AND REVERSIBLE APPLICATIONS

FOR SINGLE PHASE



FOR THREE PHASE



INDUSTRIAL FANS

HEAVY DUTY EXHAUST FANS

EXHAUST FAN PERFORMANCE GUIDE

SIZE	IMPELLER (DIA) MM	PHASE	SPEED (RPM)	CURRENT (AMP)	POWER INPUT (WATTS)	FREE AIR DELIVERY(M ³ /H)	NOISE LEVEL dBA
030	300	Single	1400	0.43	90	1710	56
030	300	Single	950	0.26	55	1145	54
038	380	Single	1400	0.72	150	3250	63
038	380	Single	950	0.48	100	2000	56
045	450	Single	1400	1.98	410	6120	65
045	450	Single	950	0.70	145	3900	63
060	600	Single	950	2.65	550	9400	65
060	600	Single	700	1.23	255	7100	63
030	300	Three	1400	0.20	90	1900	56
030	300	Three	950	0.12	55	1250	54
038	380	Three	1400	0.30	150	3250	63
038	380	Three	950	0.22	100	2000	56
045	450	Three	1400	0.94	410	6120	65
045	450	Three	950	0.33	145	3900	63
060	600	Three	950	1.27	550	9400	65
060	600	Three	700	0.56	255	7100	63
090	900	Three	700	2.60	1200	25200	68
090	900	Three	550	1.50	700	24000	66
090	900	Three	450	1.25	585	19000	64

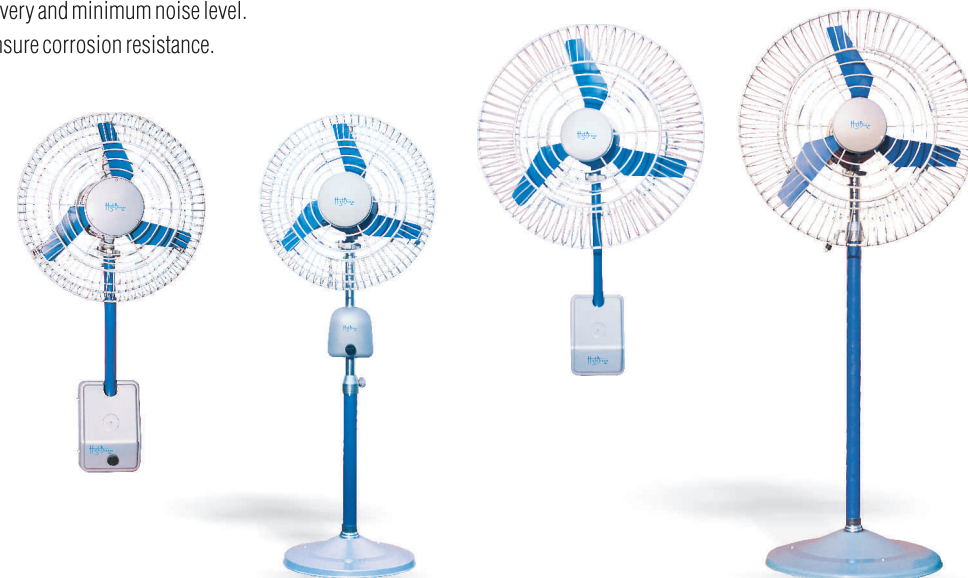
Rated voltage 230V, 50Hz AC for single phase and 415V, 50Hz for three phase fans.

HIGH BREEZE AIR CIRCULATORS

A heavy duty oscillation type propeller fan available with impeller consisting of three blades in Pedestal and Bracket type (wall / column mounted).

Special Features

- Aerodynamically designed blades for higher air delivery and minimum noise level.
- Sturdy brazed wire guards with powder coating to ensure corrosion resistance.
- Epoxy powder coated.
- Indexing to different positions at 360° for flexibility.
- Dynamic balancing of blades.
- Adjustable height for Pedestal model.
- Double ball bearings for longer life.
- Oscillation to 85°.
- Robust base to ensure absolute stability.
- Power consumption limited to bare minimum.
- Attractive aesthetic design to suit your decor.
- Optional regulator for variation of speed.
- Generally conforming to IS : 2997-1964.



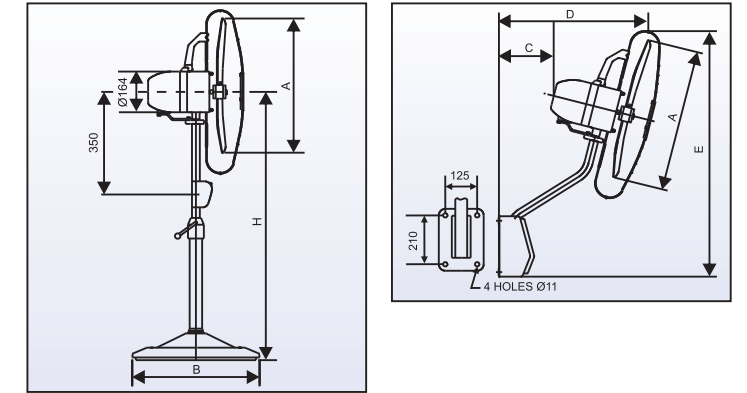
INDUSTRIAL FANS

HIGH BREEZE AIR CIRCULATORS

AREA OF APPLICATIONS

Air Circulators are useful for application in:

- Restaurants
- Theatres
- Offices
- Railway Stations
- Pandal Decorators
- Bus Depots
- Heat Treatment Shops
- Public Places
- Conference Halls
- Auditoriums
- Airports
- Factories
- Shops



DIMENSIONAL SPECIFICATIONS

PHASE	SIZE	A	B	H		E		C		D		WEIGHT IN Kgs	
				MIN	MAX	MIN	MAX	MIN	MAX	MIN	MAX	PEDESTAL	BRACKET TYPE
Single	045	450	390	1025	1350	703	873	64	235	391	610	17.0	12.5
Single	060	600	520	1325	1750	800	1014	149	336	494	753	24.0	14.5
Three	060	600	520	1325	1750	800	1014	149	336	494	753	24.0	14.5
Single	075	750	520	1325	1750	905	1160	230	438	584	895	26.5	17.0

AIR CIRCULATOR PERFORMANCE GUIDE

SIZE	TYPE	SWEEP (MM)	PHASE	SPEED (RPM)	CURRENT (AMP)	POWER INPUT (WATTS)	* AIR DELIVERY (M ³ /H)	* PEAK AIR VELOCITY (M/MIN)	ADJUSTABLE HEIGHT (M)	NOISE LEVEL dBA
045	PEDESTAL	450	Single	1400	0.45	100	7500	250	1.35/1.025	64
045	BRACKET	450	Single	1400	0.45	100	7500	250		64
060	PEDESTAL	600	Single	1400	0.95	200	16000	250	1.75/1.325	68
060	BRACKET	600	Single	1400	0.95	200	16000	250		68
060	PEDESTAL	600	Three	1400	0.4	140	16000	250	1.75/1.325	68
060	BRACKET	600	Three	1400	0.4	140	16000	250		68
075	PEDESTAL	750	Single	1400	1.54	320	22000	250	1.75/1.325	76
075	BRACKET	750	Single	1400	1.54	320	22000	250		76

Rated voltage 230V, 50Hz AC for single phase & 415V, 50Hz AC for three phase fans.
* At a distance of 6 times sweep (Impeller diameter). ** Available on request.
Built-in Regulator available only for 450mm sweep. Conforming to IS : 2997-1964.

AIR CURTAIN

Keep your establishment free from dust, smells, insects, fumes and heat! The Crompton Greaves Air Curtain is particularly effective in air-conditioned areas, preventing warm air from entering and cold air from wastefully flowing out!

ADVANTAGES

- Aerodynamically designed radial flow fans for minimum noise levels.
- Stainless steel impeller blades combine high velocity with low power consumption.
- Compact, powerful motor ensures smooth starting and trouble-free performance.
- Sturdy, robust body, powder coated to enhance aesthetics.

AREA OF APPLICATION

COMMERCIAL

- Shops and shopping malls
- Showrooms
- Airports
- Hotels and restaurants
- Theatre complexes
- Hospitals and clinics

INDUSTRIAL

- Pharmaceuticals
- Paints industry
- Food processing
- Cold storage

